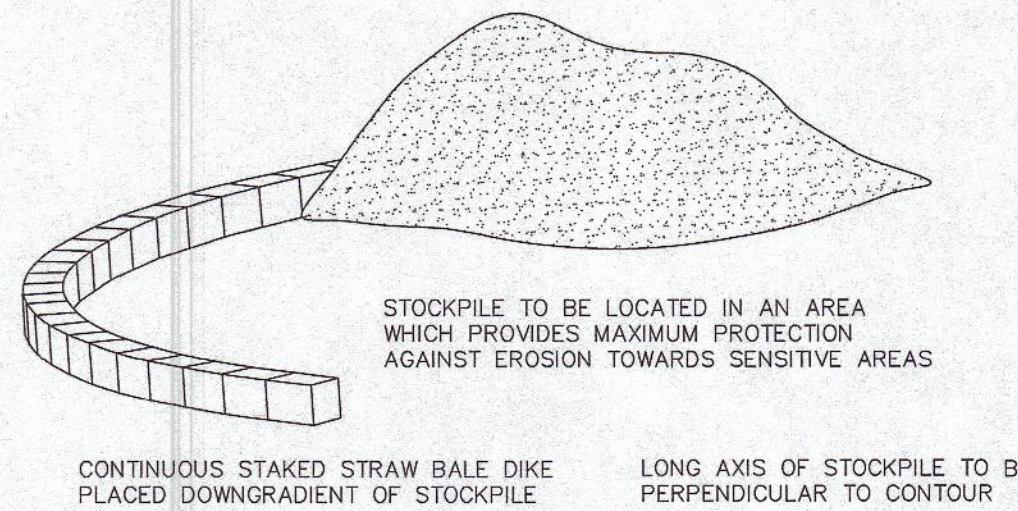
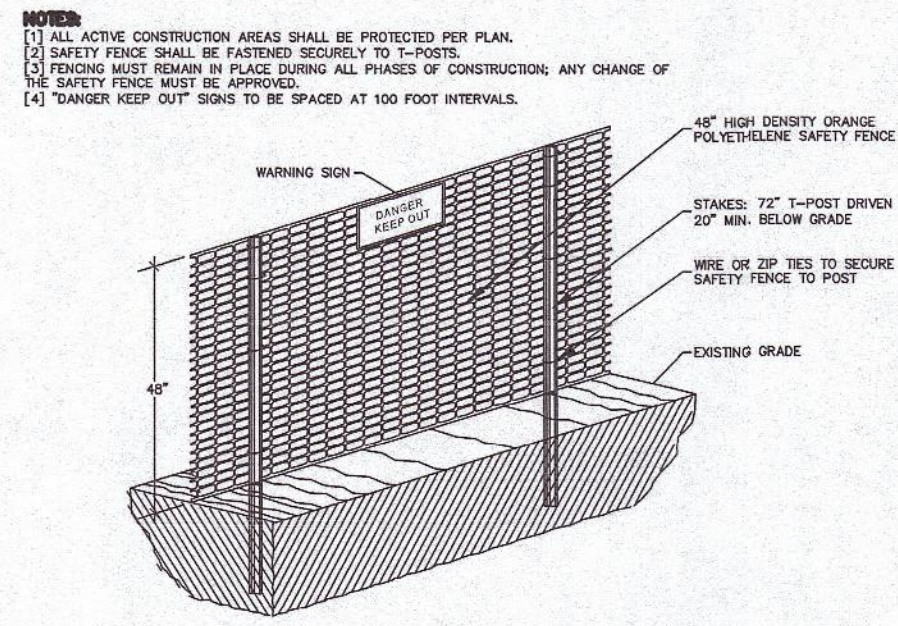
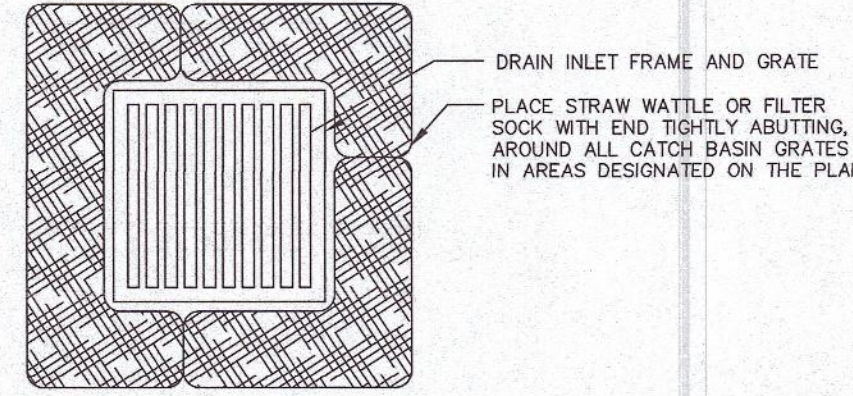
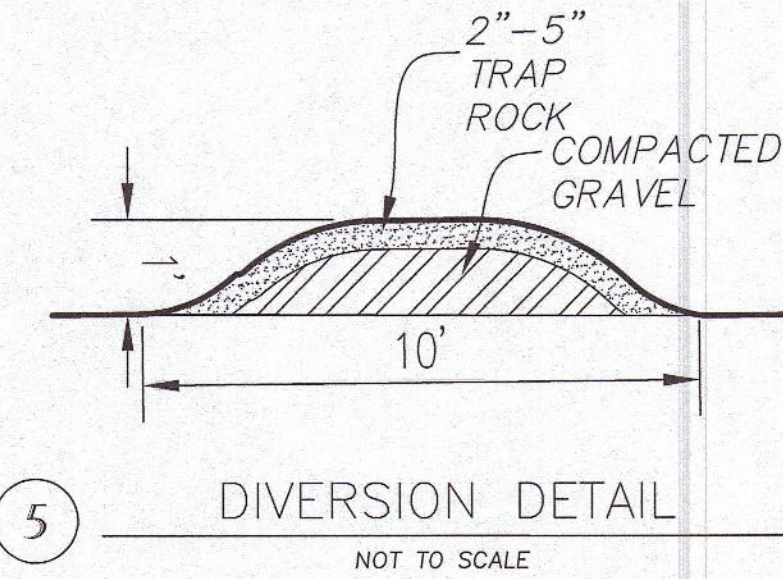


① TEMPORARY SEDIMENT BASIN
NOT TO SCALE

② EROSION CONTROL BARRIER (ECB)
NOT TO SCALE

③ RIP-RAP SLOPE STABILIZATION
NOT TO SCALE

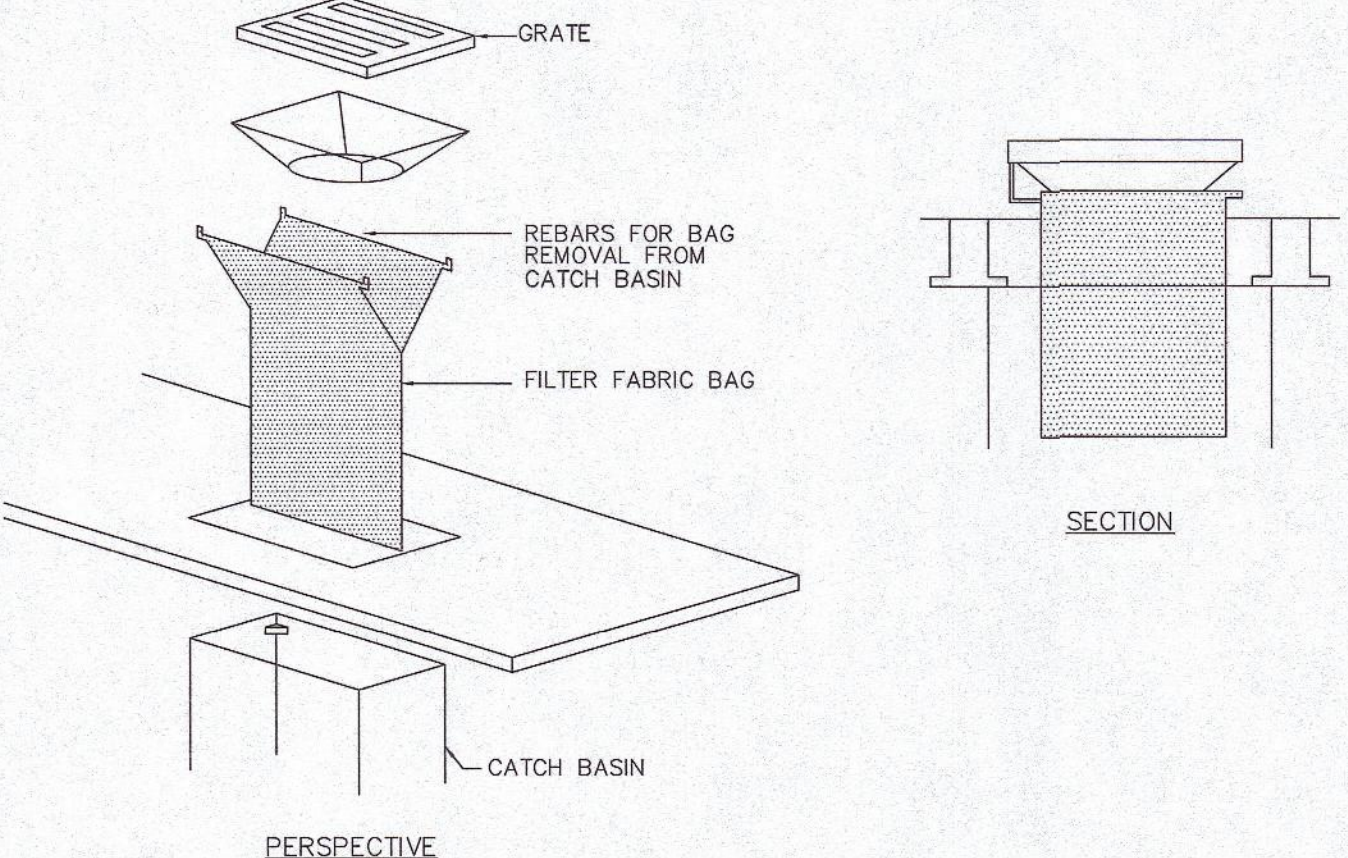
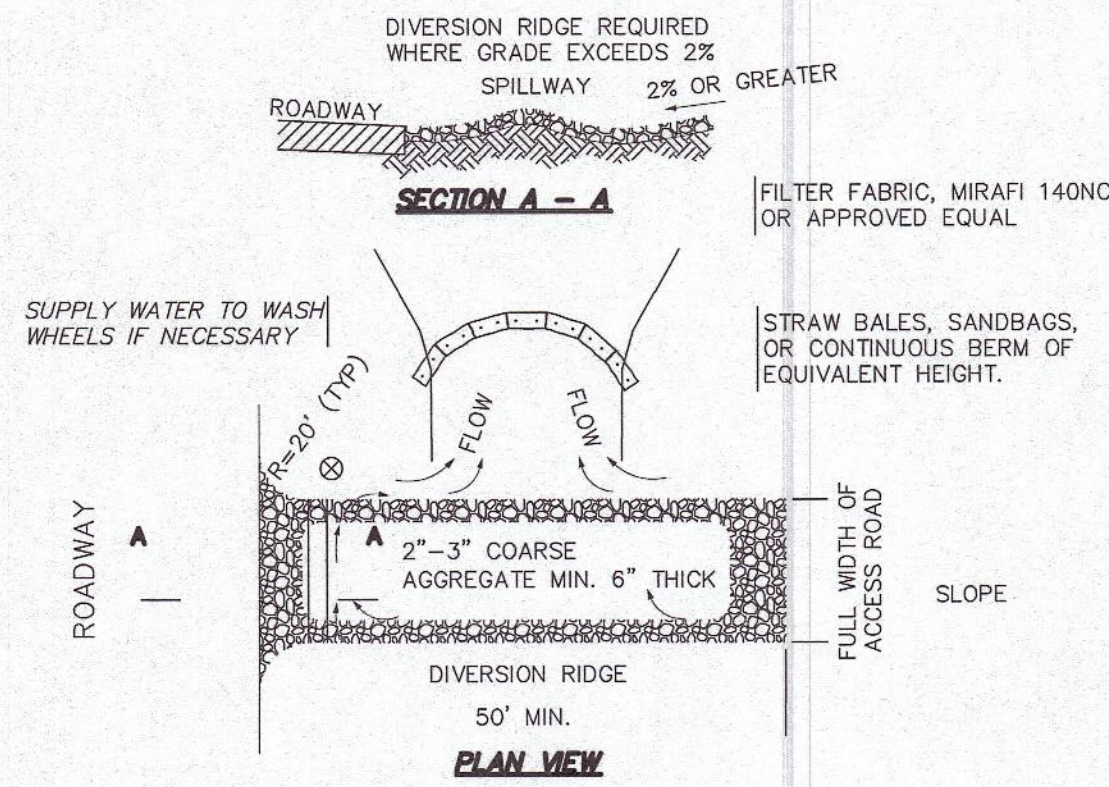
④ WATTLE EROSION CHECKS
NOT TO SCALE



⑦ CONSTRUCTION SAFETY FENCE
NOT TO SCALE

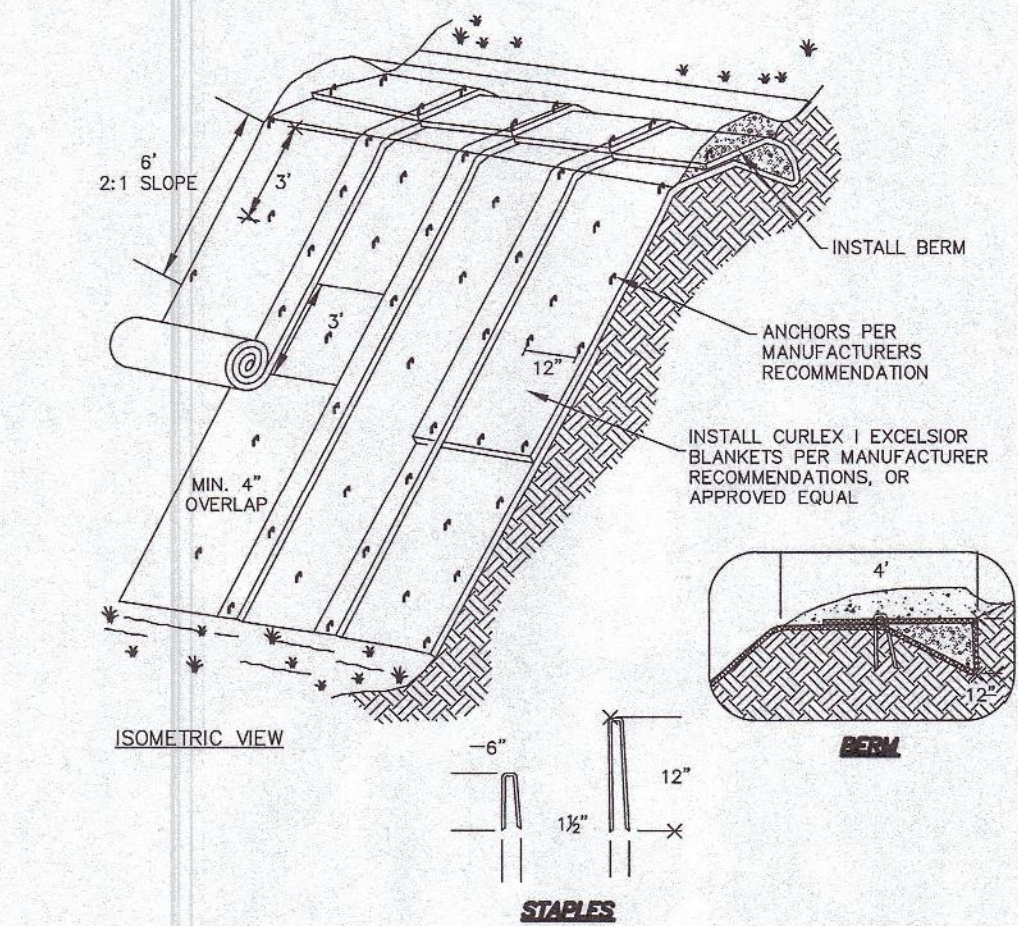
⑧ TEMPORARY STOCKPILE
NOT TO SCALE

⑥ CATCH BASIN STRAW WATTLE/FILTER SOCK
NOT TO SCALE



NOTES:
 (1) TO BE SILTSTACK BY ATLANTIC CONSTRUCTION FABRICS, INC., OR APPROVED EQUAL.
 (2) TO BE INSTALLED IMMEDIATELY FOLLOWING THE INSTALLATION OF CATCH BASIN STRUCTURE AND REMAIN UNTIL FINISH COURSE IS PLACED.
 (3) FILTER BAG SHALL BE MAINTAINED AND CLEANED AS NEEDED.

⑩ CATCH BASIN FILTER BAG
NOT TO SCALE



⑪ EROSION CONTROL BLANKET SLOPE STABILIZATION
NOT TO SCALE

EROSION AND SEDIMENT CONTROL REQUIREMENTS

PART 1 - GENERAL

1.01 SUMMARY
 A. FURNISH, INSTALL, AND MAINTAIN TEMPORARY AND PERMANENT EROSION AND SEDIMENT CONTROL MEASURES, SUCH AS, BUT NOT NECESSARILY LIMITED TO, STRAW BALE AND SILT FENCE BARRIERS, RIP-RAP, VEHICLE TRACKING PADS, DIVERSION CHANNELS AND BERMS, CHECK DAMS, STRATEGICALLY LOCATED STOCKPILES, SEDIMENT BASINS, MULCH, AND SEED MIX (HYDROSEED "CONTROL MEASURES") ACCORDING TO PREVENT THE CONVEYANCE OF EROSION PRODUCTS (E.G. SOIL, MULCH, SOD) OFF SITE, OR INTO ENVIRONMENTALLY SENSITIVE AREAS OR INTO AREAS WHERE WORK WILL BE ADVERSELY IMPACTED. ENVIRONMENTALLY SENSITIVE AREAS INCLUDE, BUT ARE NOT NECESSARILY LIMITED TO, WETLANDS, THREATENED WETLANDS, WETLAND BUFFER ZONES, INTERMITTENT AND PERENNIAL STREAMS / RIVERS, AND THEIR ATTENDANT BUFFER ZONES.

ALL METHODS AND MATERIALS USED FOR EROSION CONTROL SHALL CONFORM TO THE REQUIREMENTS SET FORTH IN EROSION AND SEDIMENT CONTROL GUIDELINES FOR URBAN AND SUBURBAN AREAS A GUIDE FOR PLANNERS, DESIGNERS, AND MUNICIPAL OFFICIALS, AS PUBLISHED BY THE MASSACHUSETTS DEPARTMENT OF ENVIRONMENTAL PROTECTION, BUREAU OF RESOURCE PROTECTION, UNLESS OTHERWISE APPROVED IN WRITING.

- REFER TO DRAWINGS FOR LOCATION AND DETAILS OF LIMITS OF DISTURBANCE AND CONTROL MEASURES REQUIRED TO COMENCE WORK. LIMITS OF DISTURBANCE SHALL BE MARKED WITH PIPE, SIGNS, OR ORANGE CONSTRUCTION FENCE PRIOR TO COMMENCING ANY LAND DISTURBANCE ACTIVITIES. CONTROL MEASURES WILL BE ADOPTED ONLY FOR VEGETATION CLEARING. THE DRAWINGS ARE NOT INTENDED TO GRAPHICALLY DEPICT ALL CONTROL MEASURES THAT WILL BE REQUIRED TO MEET THE REQUIREMENTS DESCRIBED IN 1.01.A.
- DESIGN AND EMPLOY CONTROL MEASURES THROUGHOUT THE DURATION OF PROJECT, OVER ALL AREAS DISTURBED OR UNDISTURBED BY CONSTRUCTION, AS NECESSARY TO MEET THE REQUIREMENTS DESCRIBED IN 1.01.A.
- DESIGN AND EMPLOY TEMPORARY CONTROL MEASURES AS NECESSARY TO MEET THE REQUIREMENTS DESCRIBED IN 1.01.A, WHILE ALLOWING WORK TO PROCEED IN AN EFFICIENT, COST EFFECTIVE MANNER.
- DESIGN, EMPLOY, AND MAINTAIN CONTROL MEASURES UNTIL SUCH TIME AS THE ENTIRE SITE IS PERMANENTLY STABILIZED BY ESTABLISHED VEGETATION, FINISH LANDSCAPE MATERIALS, PAVED SURFACES, AND/OR ROOF AREA.
- ONCE THE SITE IS PERMANENTLY STABILIZED AND CERTIFIED AS SUCH BY ENGINEER, REMOVE TEMPORARY CONTROL MEASURES WHILE PROTECTING STABILIZED SURFACES.

1.02 SUBMITTALS

- SUBMIT PRODUCT DATA, WARRANTY, AND TEST REPORTS AS INDICATED ON THE DRAWINGS.
 - SUBMIT SKETCH SHOWING LOCATIONS OF PROPOSED STOCKPILE AREAS, CONSTRUCTION ENTRANCES AND EROSION CONTROLS IF NOT SHOWN ON THE SITE PLAN OR DIFFERENT FROM THOSE LOCATIONS SHOWN ON THE SITE PLAN.
 - A SITE SPECIFIC SEQUENCE OF CONSTRUCTION FOR EACH PORTION OF THE SITE. NO PORTION OF THE SITE SHALL EXCEED FIVE (5) ACRES.
- 1.03 QUALITY ASSURANCE**
- COMPLY WITH GOVERNING CODES AND REGULATIONS. PROVIDE PRODUCTS FROM ACCEPTABLE MANUFACTURERS. USE EXPERIENCED INSTALLERS. DELIVER, HANDLE, AND STORE MATERIALS IN ACCORDANCE WITH MANUFACTURER'S INSTRUCTIONS.
 - CONFORM TO CONDITIONS OF APPROVAL ISSUED BY REGULATORY AGENCIES INCLUDING, BUT NOT NECESSARILY LIMITED TO, LOCAL PLANNING BOARD, CONSERVATION COMMISSION, CITY/COUNTY, BOARD OF HEALTH, PUBLIC WORKS / HIGHWAY DEPARTMENT, STATE ENVIRONMENTAL PROTECTION DEPARTMENT, AND U.S. GOVERNMENT, ENVIRONMENTAL PROTECTION AGENCY, WHERE CONDITIONS OF REGULATORY APPROVAL DIFFER FROM REQUIREMENTS CONTAINED HEREIN OR ON THE DRAWINGS, COMPLY WITH THE MORE STRINGENT REQUIREMENT.

PART 2 - PRODUCTS

2.01 MATERIALS

- STRAW BALES: NEED FREE DRY GRASS OR STRAW, MACHINE BOUND WITH JUTE OR WIRE, APPROXIMATE SIZE EACH BALE 42" X 16" X 16". EACH BALE SHALL BE STAKED WITH A MINIMUM OF TWO 3/4" LONG HARDWOOD STAKES. NOTE: HAY SHALL NOT BE USED.
- STRAW WATTLE: NORTH AMERICAN GREEN MODEL WS1210 OR APPROVED EQUAL.
- SILT FENCE: NON-WOVEN, UV-RESISTANT, POLYPROPYLENE FABRIC, FLOW RATED AT 120 GPM/50 MINIMUM, GRAB TENSILE RATED AT 124 POUNDS MINIMUM, WITH INTEGRAL STAKE LOOPS, AND HARDWOOD STAKES. USE NO. 2130 BY AMCO FABRICS & FIBERS, OR APPROVED EQUAL.
- MULCH: ORGANICS INCLUDING STRAW, PROCESSED PINE / HEMLOCK TWIGS AND NEEDLES.
- SEED MIXES: SHALL MEET THE REQUIREMENTS OF MASSACHUSETTS HIGHWAY DEPARTMENT STANDARD SPECIFICATIONS FOR HIGHWAYS AND BRIDGES, LATEST EDITION SECTION 6.03.01 OR 6.03.1 AS APPROPRIATE.
- EROSION CONTROL BLANKET: CURLED WOOD FIBER ON PHOTODEGRADABLE EXTRUDED PLASTIC MATRIX, BOX OF FIBERS 6-INCHES LONG OR LONGER, WEIGHT 0.975 POUNDS / SQ. YD. CONTAINING NO CHEMICAL ADDITIVES. USE CURLEX I BLANKET BY AMERICAN EXCELSIOR COMPANY, OR APPROVED EQUAL.
- ROCK RIP-RAP: SOUND, ANGULAR, 6-INCH MINUS PROCESSED ROCK, BLAST ROCK, OR TAILINGS.
- CRUSHED STONE: SOUND, ANGULAR, 2-INCH MINUS PROCESSED CRUSHED STONE.

PART 3 - EXECUTION

3.01 THROUGHOUT CONSTRUCTION

- DESIGN WORK SEQUENCE SO AS TO LIMIT DRAINAGE AREA THAT IS TRIBUTARY TO DISTURBED AREAS. DESIGN, EMPLOY, AND MAINTAIN CONTROL MEASURES SUCH AS DIVERSION CHANNELS AND BERMS, STRATEGICALLY LOCATED STOCKPILES, SEDIMENT BASINS TO SUBSIDIZE DRAINAGE AREAS INTO SMALL, MANAGEABLE SUBAREAS, THEREBY MINIMIZING RUNOFF AND THE POTENTIAL FOR EROSION.
- MAINTAIN BARRIER AT LIMIT OF WORK AND PROTECT EXISTING VEGETATION / FACILITIES OUTSIDE OF LIMIT OF WORK.
- MAINTAIN SPARE MATERIAL STOCKPILES FOR IMMEDIATE EMPLOYMENT / REPAIR / EXPANSION OF CONTROL MEASURES AT A MINIMUM, SUCH MATERIALS SHALL INCLUDE HAY BALES, SILT FENCE, AND STAKES, AND CRUSHED STONE.
- INSPECT AND MAINTAIN EFFECTIVENESS OF CONTROL MEASURES BY REPAIRING AS NECESSARY TO ENSURE INTENDED FUNCTION, BY SUPPLEMENTING AS NECESSARY FOR ADEQUATE EXISTING BY REMOVING TRAPPED PRODUCTS OF EROSION AS NECESSARY TO MAINTAIN EFFECTIVE TRAP VOLUME.
- LIMIT EXTENT OF WORK AREA SO THAT ALL DISTURBED AREAS CAN BE STABILIZED WITH CONTROL MEASURES WITHIN A 24-HOUR PERIOD.
- INSTALL CONTROL MEASURES AS SOON AS PRACTICABLE AFTER EACH MANAGEABLE PORTION OF EARTHWORK IS COMPLETE. EMPLOY TEMPORARY MEASURES AS NECESSARY TO STABILIZE DISTURBED AREAS, EVEN WHERE SUBSEQUENT CONSTRUCTION OPERATIONS MAY REQUIRE RE-DISTURBANCE.

PART 3 - CONTINUED

- WHEN INTENSE RAINFALL IS EXPECTED, CONSIDER, DEVISE, AND EMPLOY REINFORCING CONTROL MEASURES PRIOR TO THE RAINFALL EVENT TO MEET THE REQUIREMENTS DESCRIBED IN 1.01.A, IF NECESSARY, EMPLOY TEMPORARY CONTROL MEASURES ON MATERIAL STOCKPILES TO COUNTERACT POTENTIAL SEDIMENT TRANSPORT DURING INTENSE RAINFALL.
- WHEN VEHICLE REFUELING IS REQUIRED ON SITE, CONDUCT REFUELING OPERATIONS OUTSIDE OF ENVIRONMENTALLY SENSITIVE AREAS.
- PROPERLY DISPOSE OF DEBRIS, SOLID WASTE, TRASH, AND CONSTRUCTION WASTE / BYPRODUCTS OFF-SITE.
- SHEEP ON-SITE PAVED AREAS AND OFF-SITE STREETS AS NECESSARY TO PREVENT SLIT AND DEBRIS ORIGINATING ON SITE FROM ENTERING CLOSED DRAINAGE SYSTEMS AND / OR ENVIRONMENTALLY SENSITIVE AREAS. WHEN NECESSARY, UTILIZE WATER SPRAYING, SURFACE ROUGHENING AND/OR APPLY POLYMERS, SPRAY-ON TACKIFIERS, CHAINERS AND BARRIERS FOR DIRT CONTROL.
- INSPECT EROSION CONTROLS DAILY THROUGHOUT CONSTRUCTION REPAIR DAMAGED CONTROLS IMMEDIATELY.
- SITE PREPARATION AND ACCESS
- WALK SITE AND IDENTIFY LOCATIONS OF LIMIT OF WORK AND ENVIRONMENTALLY SENSITIVE AREAS. ESTABLISH CONSTRUCTION STAGING AREA, LOCATED BEYOND ENVIRONMENTALLY SENSITIVE AREAS.
- INSTALL CONTROL MEASURES AS SHOWN ON THE DRAWINGS, INCLUDING THOSE DEFINING THE LIMIT OF WORK.
- LIMIT VEHICULAR TRAFFIC TO AND FROM SITE TO MINIMIZE TRANSPORT OF SEDIMENT.
- CLEANING, GRUBBING, AND STRIPPING
- SCHEDULE GRUBBING AND STRIPPING TO OCCUR IMMEDIATELY PRIOR TO EARTH DISTURBANCE. DEFENDING ON SITE AREA, CONSIDER MULTIPLE GRUBBING PHASES, SEQUENCED TO TAKE ADVANTAGE OF THE EROSION PREVENTION POTENTIAL OF EXISTING VEGETATIVE COVER.
- MINIMIZE THE AREA OF EXISTING VEGETATION REMOVED WHEREVER POSSIBLE. NO GREATER THAN FIVE (5) ACRES SHALL BE UNSTABLE AT ANY TIME.
- LOCATE AND SIZE STOCKPILES TO MINIMIZE EROSION POTENTIAL, TAKING ADVANTAGE OF TERRAIN SLOPE AND ASPECT, WHERE APPROPRIATE.
- PROTECT VEGETATION, INCLUDING ROOT SYSTEMS, BEYOND LIMIT OF CLEARING.
- PROCESS TIMBER, STUMPS, SLASH, AND BRUSH SO AS TO PROTECT ENVIRONMENTALLY SENSITIVE AREAS AND INSTALLED CONTROL MEASURES. PROPERLY DISPOSE OF EXCESS OFF-SITE. BURIAL OF STUMPS ON-SITE IS PROHIBITED.
- EXCAVATION FOR BUILDING FOUNDATIONS AND UTILITIES
- DESIGN AND INSTALL CONTROL MEASURES ADEQUATE TO HANDLE DISCHARGES AND TRAP SEDIMENT FROM FOOTING PUMP AND WELL POINT PUMPS PRIOR TO EXCAVATION.
- ARMOR SUMP PUMP DISCHARGE LOCATIONS TO PREVENT EROSION AT POINT OF DISCHARGE AND AREAS DOWNSTREAM.
- IF FOUNDATION EXCAVATIONS GRADE TO DAYLIGHT ON THE LOW SIDE, DESIGN AND INSTALL CONTROL MEASURES TO HANDLE SURFACE AND GROUNDWATER FLOW FROM EXCAVATION LOW POINT.
- STOCKPILE EXCAVATED MATERIALS TO BAFFLE OVERLAND RUNOFF, AVOIDING THE CREATION OF LENGTHY PATHS OF CONCENTRATED RUNOFF. STOCKPILE SLOPES SHALL NOT EXCEED 2:1.
- BACKFILL UTILITY TRENCHES AS SOON AS PRACTICABLE TO PREVENT FLOODING, SLOUGHING, POTENTIAL OVERFLOW, AND REPETITIVE EARTH DISTURBANCE.
- SITE GRADING
- WHERE APPLICABLE, FOLLOW EXCAVATION AND FILL PRACTICES SHOWN ON DRAWINGS TO LOCALIZE AND MINIMIZE EROSION.
- MONITOR SEDIMENT VOLUME IN TEMPORARY SEDIMENT BASINS AND AT DIVERSION BERMS AND CHECK DAMS, IN ALL AREAS EXCEPT THOSE THAT DO NOT PRESENT POTENTIAL PROBLEMS WITH REGARD TO FUTURE SOIL STABILITY, DRAINAGE OR BEARING CAPACITY. REMOVE AND PROPERLY DISPOSE OF TRAPPED SEDIMENT BEFORE BRINGING SITE TO FINAL SUBGRADE.
- EXPOSED SOILS SHALL BE PERMANENTLY STABILIZED WITHIN FIVE (5) BUSINESS DAYS OF COMPLETION OF CONSTRUCTION OF A GIVEN AREA. EXPOSED AREAS WHERE NO WORK HAS OCCURRED FOR FOURTEEN (14) DAYS SHALL BE TEMPORARILY STABILIZED WITH HYDROSEED OR OTHER APPROVED METHOD.
- SLOPES STEEPER THAN 3:1 SHALL BE STABILIZED IMMEDIATELY AFTER COMPLETION.
- LANDSCAPING
- COMPLETE LANDSCAPING AS SOON AS POSSIBLE AFTER COMPLETION OF FINAL SUBGRADE.
- IMMEDIATELY AFTER PLACEMENT OF TOPSOIL, STABILIZE WITH CONTROL MEASURES INCLUDING, BUT NOT NECESSARILY LIMITED TO, SEED MIX, MULCH, AND / OR BLANKET.
- PERMANENT SEEDING MAY BE PERFORMED IN THE SPRING PRIOR TO JULY 1 AND IN BETWEEN AUGUST 1 AND OCTOBER 15. PERMANENT SEEDING AT OTHER TIMES SHALL BE APPROVED AND SHALL ONLY BE ALLOWED WITH AN APPROVED MULCHING AND EROSION PROGRAM.

P.E.	P.L.S.

GRAPHIC SCALE

REVISIONS

REV.	DATE	DESCRIPTION
1	1/8/24	REVISED PLANS.
2	3/25/24	REVISED PLANS.
3	5/19/24	REVISED PLANS.

PROJECT NO.	J-016
DESIGNED BY	PML
CHECKED BY	MD
DATE	9/13/23
CAD FILE	J-016 SITE PLAN
PLAN NO.	

APPLICANT/DEVELOPER:
LOBISSER BUILDING CORP.
 1 Charlesview Road • Hopedale, MA 01747
 P:(508) 476-6235

TITLE:
Upton Apartments
47 Main Street,
Upton Massachusetts
Preliminary
Residential Development Plans
Comprehensive Permit Application
Upton Zoning Board of Appeals

SHEET TITLE

EROSION CONTROL
NOTES & DETAILS

SHEET NO.

C-9.2

NOT FOR CONSTRUCTION