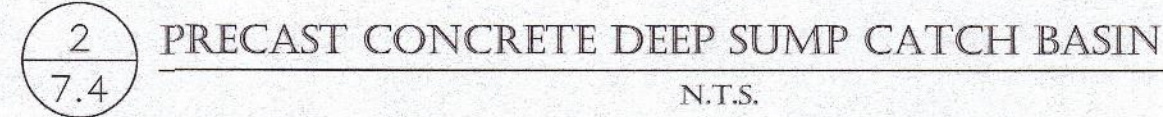


1. REINFORCED STEEL CONFORMS TO LATEST A185 SPEC. 0.12 SQ. IN./LINEAL FT. (0.15 SQ. IN. FOR 60" DIA) AND BASE BOTTOM.
2. CONCRETE COMPRESSIVE STRENGTH 4000 PSI MIN.
3. MANHOLE DESIGN CONFORMS TO LATEST ASTM C478 SPEC. FOR "PRECAST REINFORCED CONCRETE MANHOLE SECTIONS".
4. JOINT SEALANT SHALL BE SYNTHETIC RUBBER GASKET THAT COMPLIES W C-443 OR C-361. 5. BASE SECTION SHALL BE ONE POUR MONOLITHIC.



1. USE 4-FLANGE LEBARON LF248-2 GRATES AT ALL CB STRUCTURES.
2. SUBMIT SHOP DRAWINGS FOR APPROVAL.
3. REINFORCED STEEL CONFORMS TO LATEST A185 SPEC. 0.12 SQ. IN./LINEAL FT. (0.15 SQ. IN. FOR 60" DIA) AND BASE BOTTOM.
4. CONCRETE COMPRESSIVE STRENGTH 4000 PSI MIN.
5. JOINT SEALANT SHALL BE SYNTHETIC RUBBER GASKET THAT COMPLIES W/ C-443 OR C-361.

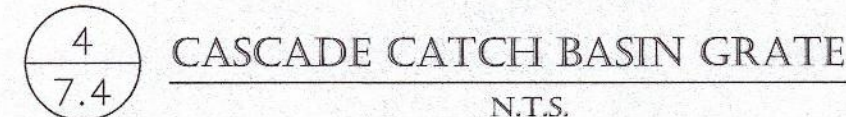


NOTES:

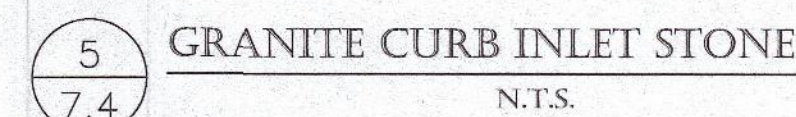
1. 4,000 PSI PRECAST CONCRETE AT 28 DAYS CONFORMING WITH LATEST ASTM C478.
2. REINFORCING PER LATEST ASTM A185.
3. STRUCTURE SHALL BE RATED FOR H-20 LOADING UNLESS SPECIFIED OTHERWISE.
4. VERIFY FRAME AND GRATE TO SUIT APPLICATION



1. CASCADE GRATES ARE REQUIRED WHERE THE ROAD GRADE IS 7% (SEVEN PERCENT) OR GREATER PER SUBDIVISION RULES AND REGULATIONS.



1. REQUIRED AT CATCH BASINS
ADJACENT TO MODIFIED CAPE COD
BERM.



NOTES:

1. MINIMUM STONE DIAMETER: 6"
2. MINIMUM WEIGHT OF STONE: 50 LBS.
3. MAXIMUM WEIGHT OF STONE: 125 LBS.
4. PLACE ALL RIP-RAP OVER FILTER FABRIC, AMOCO 4508 OR APPROVED EQUAL.



7	METAL TRASH RACK
7.4	N.T.S.

The image contains two technical drawings of a storm drain inlet.

SECTION View: This side-view drawing shows the inlet structure. Key features include:

- A top width of 1'.
- A vertical depth of 2'-0".
- A flow direction indicated by an arrow and the word "FLOW".
- Reinforcement consisting of #3 bars at 12" typical spacing.
- A "CLASS 'A' GEMENT COMC." (Class A Cement Concrete) layer.
- A "1/2" MIN. CLEAR (TYP.)" dimension for the concrete thickness.
- A "12" MIN. GRAVEL BASE" at the bottom.
- A 18" dimension for the base width.

ELEVATION View: This top-down view shows the circular inlet opening. Key features include:

- A circular opening with diameter "D".
- A "1" CHAMFER (TYP.)" at the top edge.
- A "FINISH GRADE" line above the inlet.
- A "CLASS CEMENT CONCRETE" label pointing to the surrounding area.

8 TYP. CONCRETE HEADWALL DETAIL
7.4 N.T.S.

NOTE: DEBRIS GRATE REQUIRED ON ALL PIPES
WITH A DIAMETER GREATER THAN 36"

P.L.S.

[illegible]

PLAN NO.	
----------	--

1 Charlesview Road • Hopedale, MA 01747
P:(508) 478-6235

Upton Massachusetts
Preliminary
Residential Development Plans
Comprehensive Permit Application
Upton Zoning Board of Appeals

CONSTRUCTION DETAILS

SHEET 4 OF 4

C-7.4

NOT FOR CONSTRUCTION

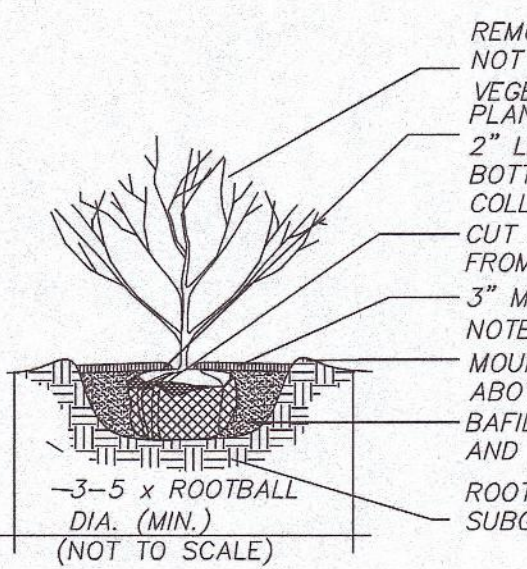


UTILITIES ARE PLOTTED FROM FIELD LOCATION AND ANY RECORD INFORMATION AVAILABLE, AND SHOULD BE CONSIDERED APPROXIMATE. OTHER UTILITIES MAY EXIST WHICH ARE NOT EVIDENT OR FOR WHICH RECORD INFORMATION WAS NOT AVAILABLE. CONTRACTORS (IN ACCORDANCE WITH MASS.G.L. CHAPTER 82 SECTION 40 AS AMENDED) MUST CONTACT ALL UTILITY COMPANIES BEFORE EXCAVATING AND DRILLING. ALSO, CALL "DIG-SAFE" AT (888)344-7233 (1(888)DIG-SAFE).

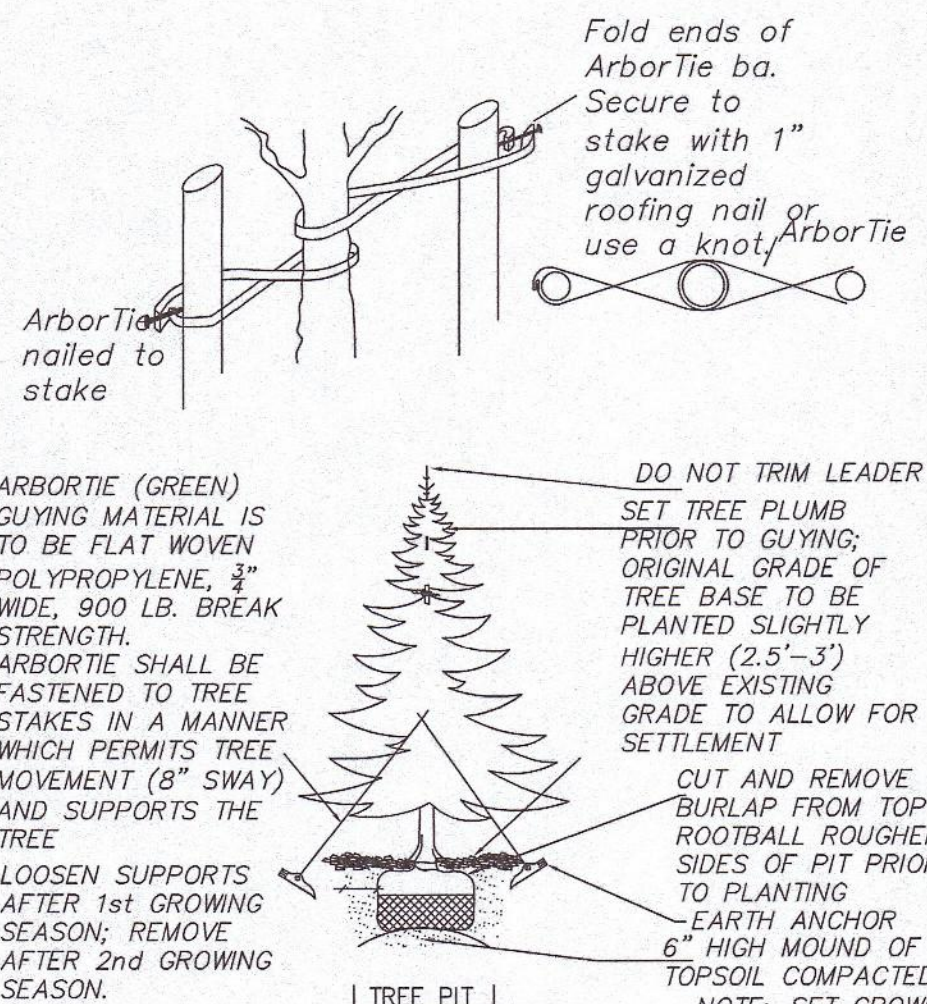
EXISTING LINES OTHER THAN THOSE INDICATED ON THESE DRAWINGS MAY BE ON THE SITE. THE CONTRACTOR IS WARNED, TO PROCEED WITH CAUTION WITH ALL WORK, ESPECIALLY, EXCAVATION WORK, AND TO MAKE ALL POSSIBLE INVESTIGATIONS AS TO POSSIBLE UNMARKED UTILITY LINES.

LANDSCAPING NOTES

- 1 NOTIFY DIG-SAFE AT 1-888-DIG-SAFE AND LOCAL AUTHORITIES PRIOR TO ANY TYPE OF SITE PREPARATION OR CONSTRUCTION.
- 2 THE CONTRACTOR SHALL SUPPLY ALL PLANT MATERIAL AND MULCH IN SUFFICIENT QUANTITIES TO COMPLETE PLANTING AS SHOWN ON THE DRAWINGS. DRAWING QUANTITIES TAKE PRECEDENCE OVER PLANT LIST QUANTITIES.
- 3 ALL PLANT MATERIAL SHALL CONFORM TO THE GUIDELINES SET FORTH BY THE AMERICAN NURSERY & LANDSCAPE ASSOCIATION.
- 4 ALL TREES AND SHRUBS SHALL BE PLANTED WITH THE "BEST FACE" SHOWING. ALL PLANTS SHALL BE BALLED AND BURLAPPED OR CONTAINER GROWN, UNLESS OTHERWISE APPROVED BY THE LANDSCAPE ARCHITECT.
- 5 ALL CONTAINER GROWN STO SHALL BE HEALTHY, VIGOROUS, WELL ROOTED AND ESTABLISHED IN THE CONTAINER IN WHICH THEY ARE GROWING. THEY SHALL HAVE TOPS OF GOOD QUALITY, NO APPARENT INJURY AND BE IN A HEALTHY GROWING CONDITION. A CONTAINER GROWN PLANT SHALL HAVE A WELL ESTABLISHED ROOT SYSTEM REACHING THE SIDES OF THE CONTAINER TO MAINTAIN A FIRM BALL.
- 6 THE QUALITY OF ALL TREES & SHRUBS IS TO BE NORMAL FOR THE SPECIES. ALL PLANTS ARE TO HAVE DEVELOPED ROOT SYSTEMS, TO BE FREE OF INSECTS AND DISEASES AS WELL AS MECHANICAL INJURIES, AND IN ALL RESPECTS BE SUITABLE FOR PLANTINGS.
- 7 ALL CONTERS SHALL HAVE DORMANT BUDS AND SECONDARY NEEDLES.
- 8 WHERE SPECIFIED, CALIPER SIZE IS TO BE THE OVERRIDING FACTOR IN TREE SELECTION. CALIPER SIZE SHALL BE MEASURED 12" ABOVE THE ROOTBALL.
- 9 PLANT SUBSTITUTIONS ARE NOT ALLOWED UNLESS APPROVED BY THE PROJECT LANDSCAPE ARCHITECT.
- 10 ALL DISTURBED AREAS NOT SHOWN OTHERWISE SHALL BE LOAMED AND SEEDED AND BLENDED INTO EXISTING GRADE AND CONDITIONS.
- 11 PRIOR TO INSTALLING ANY PLANT MATERIAL, THE CONTRACTOR SHALL SUBMIT A LOAM SOIL SAMPLE FOR A ROUTINE ORGANIC, SALTS, AND NITRATE SOIL TEST. UPON THE RESULTS OF THIS TEST, THE SITE CONTRACTOR SHALL AMEND THE LOAM AS RECOMMENDED.
- 12 LAWN SEED MIX SHALL BE THE PREVIOUS YEARS CROP: 35% JEFFERSON KENTURY BLUEGRASS, 35% CARMEN CHEWING FESCUE AND 30% STALLION PERENNIAL RYEGRASS, OR APPROVED EQUAL PLANT AT A RATE OF 1 LB. PER 150 SQUARE FEET.
- 13 SLOPE SEED MIX SHALL BE THE PREVIOUS YEARS CROP: PLANT AT A RATE OF 1 LB. PER 150 SQUARE FEET. SEED MIX SHALL BE STALLION PERENNIAL RYE 10%, CREEPING RED FESCUE 50%, ANNUAL RYE GRASS 15%, JEFFERSON KENTURY BLUE GRASS 10%, RED TOP CLOVER 5%, AND LADINO CLOVER 5%, OR APPROVED EQUAL PLANT AT A RATE OF 1 LB. PER 150 SQUARE FEET.
- 14 LAWN SEED AREAS SHALL BE NOT BE DEEMED ACCEPTABLE UNTIL IN EXCESS OF 90% OF EACH AREA, INDEPENDENTLY, IS GERMINATED, GROWING AND DISPLAYING HEALTHY, UNIFORM GROWTH AND HAS BEEN CUT TWICE. THE SITE CONTRACTOR IS RESPONSIBLE FOR APPLYING AT A MINIMUM 1" OF WATER A WEEK UNTIL THE SEEDS ARE ESTABLISHED. THE WATERING SHALL OCCUR IN SMALL DOSES. THE SITE CONTRACTOR IS RESPONSIBLE FOR REMOVING ANY WEEDS (GRASS) WITHIN THE SEEDS AREAS UNTIL THE SEEDS AREAS HAVE BEEN ACCEPTED.
- 15 WITHIN THE DETENTION BASIN AND ON TOP OF THE SEPTIC SYSTEM LEACH FIELD, SEED WITH THE CONSERVATION SEED MIX FROM NEW ENGLAND WETLAND PLANT INC. PLANT AT A RATE OF ONE POUND PER 1,760 SQ. FT.
- 16 THE HYDRO SEED SLURRY SHALL BE A WOOD-BASED BONDED FIBER MATRIX. THE APPLICATION RATE SHALL BE 2,500-3,000 LB. PER ACRE SPRAYED IN AT LEAST TWO DIRECTIONS. DO NOT APPLY HYDRO SEED SLURRY RAIN IS EXPECTED WITHIN 12 HOURS, AND WHEN TEMPERATURES ARE BELOW 50 DEGREES.
- 17 PRIOR TO PLANTING, THE LANDSCAPER SHALL REVIEW AND COORDINATE WITH THE SITE UTILITY PLAN AND GRADING PLAN.
- 18 THE ROOTS OF NEWLY PLANTED TREES AND SHRUBS MUST BE KEPT STEADILY MOIST, AS THE DEVELOPING ROOTS ESTABLISH IN THE NEW SOIL. AT PLANTING, WATER THOROUGHLY TO SOAK THE ROOTS AND TO SETTLE THE NEW SOIL AROUND THE ROOT BALL. THE AMOUNT OF WATER REQUIRED WILL VARY DEPENDING ON RECENT RAINFALL, TEMPERATURE, AND WIND. IF LESS THAN ONE-INCH OF RAIN HAS FALLEN OVER THE PAST FIVE TO SEVEN DAYS, THE NEW PLANTINGS MUST BE WATERED. LAWN, TREES, AND SHRUBS WATERING SHALL OCCUR AT A MINIMUM OF TWO (2) TIMES A DAY FOR THE FIRST TWO (2) MONTHS; ONCE IN THE EARLY MORNING AND THEN THE OTHER IN THE LATE AFTERNOON. IN GENERAL TEN GALLONS OF WATER APPLIED TWICE A WEEK WILL WET A 20"-24" ROOT BALL AND PROVIDE THE EQUIVALENT OF ONE INCH OF RAIN. FALL NEW LAWN SHALL BE WATERED SO THAT IT RECEIVES AT A MINIMUM ONE INCH (1") OF WATER EVERY WEEK.
- 19 WITHIN THE LANDSCAPE ADJACENT TO THE BUILDING FOUNDATIONS, NO (HEMLOCK, PINE, SPRUCE, OR CEDAR) MULCH OR OTHER COMBUSTIBLE LANDSCAPE MATERIALS SHALL BE INSTALLED WITHIN 18" OF THE FOUNDATION. ALL LANDSCAPE BEDS SHALL RECEIVE THREE-INCHES OF BARK MULCH.
- 20 LANDSCAPE AREAS SHALL BE DEEP TILLED TO A DEPTH OF TWELVE INCHES TO FACILITATE DEEP WATER PENETRATION.

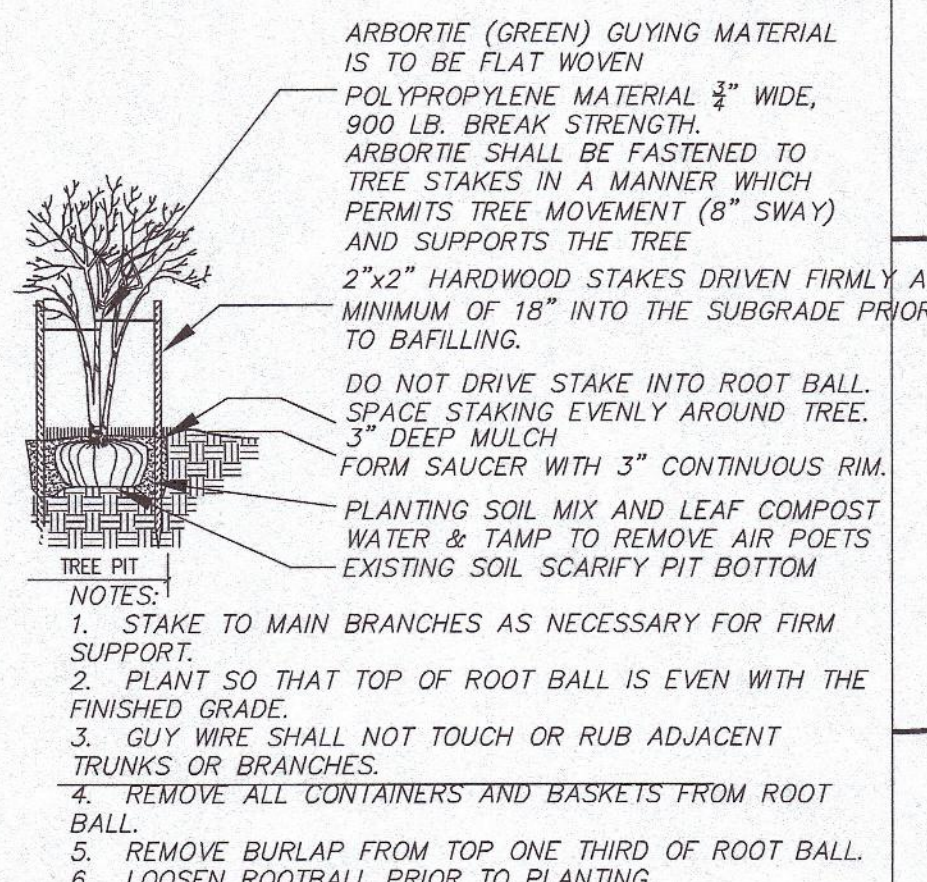


SHRUB PLANTING



EVERGREEN TREE PLANTING

NOT TO SCALE



DECIDUOUS TREE PLANTING

NOT TO SCALE

MAP 202, PARCEL 107
51 MAIN STREET

MAP 201, PARCEL 194
11 WHITNEY LN

MAP 201, PARCEL 193
13 WHITNEY LN

MAP 201, PARCEL 192
15 WHITNEY LN

MAP 201, PARCEL 191
17 WHITNEY LN

MAP 201, PARCEL 190
19 WHITNEY LN

MAP 201, PARCEL 189
21 WHITNEY LN

MAP 201, PARCEL 188
21 HAZELTINE RD

MAP 201, PARCEL 187
23 HAZELTINE RD

MAP 202, PARCEL 109
45 MAIN STREET

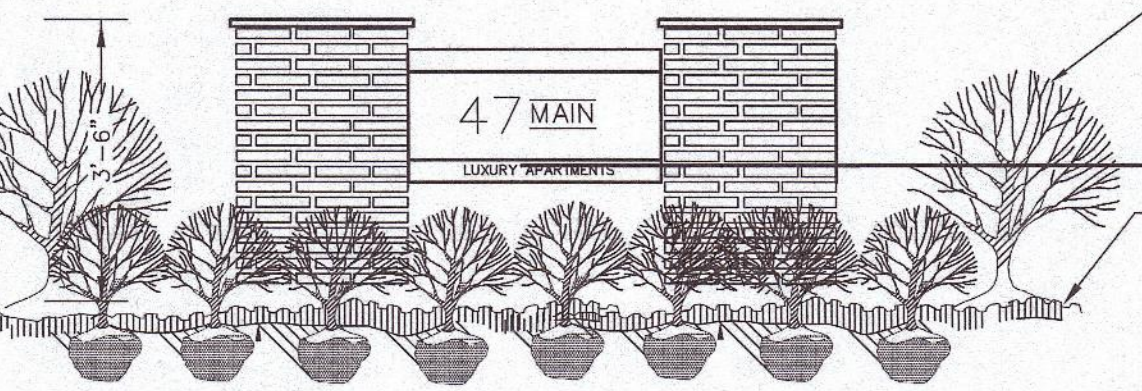
MAP 201, PARCEL 131
4 SCHOOL STREET

MAP 201, PARCEL 132
6 SCHOOL STREET

MAP 201, PARCEL 134
0 SCHOOL STREET

WETLANDS

WETLANDS



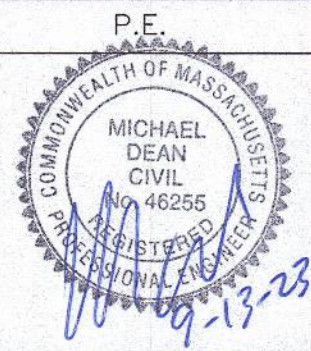
PROPOSED SIGN DETAIL

N.T.S.

Planting Schedule				
Qty.	Key	Common Name	Size	Remarks
TREES				
27	MT	Maple tree	2 1/2"-3" Cal.	B&B
8	WP	White Pine	6-7'	B&B
90	GA	ARBORVITAE	6-7'	B&B
15	HA	HYDRANGEA	2 1/2"-3" Cal.	B&B
3	DT	Dogwood Tree	2 1/2"-3" Cal.	B&B
46	MS	Mixed Shrubs & Grasses	2 1/2"-3" Cal.	B&B

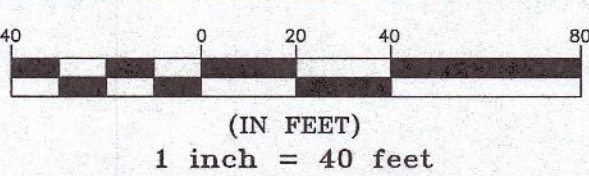
D&L Design Group
Civil Engineering & Land Surveying

115 Water Street • Milford, MA 01757
P.(508) 408-2577
www.dandlengineergroup.com



P.L.S.

GRAPHIC SCALE



REVISIONS

REV.	DATE	DESCRIPTION

PROJECT NO. J-016
DESIGNED BY PML
CHECKED BY MD
DATE 9/13/23
CAD FILE J-016 SITE PLAN
PLAN NO.

APPLICANT/DEVELOPER:

LOBISSER BUILDING CORP.
1 Charlesview Road • Hopedale, MA 01747
P.(508) 478-6236

TITLE:

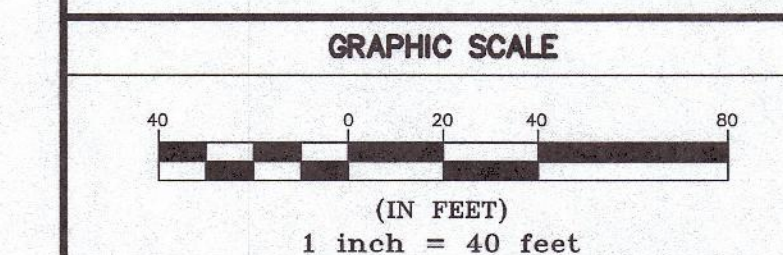
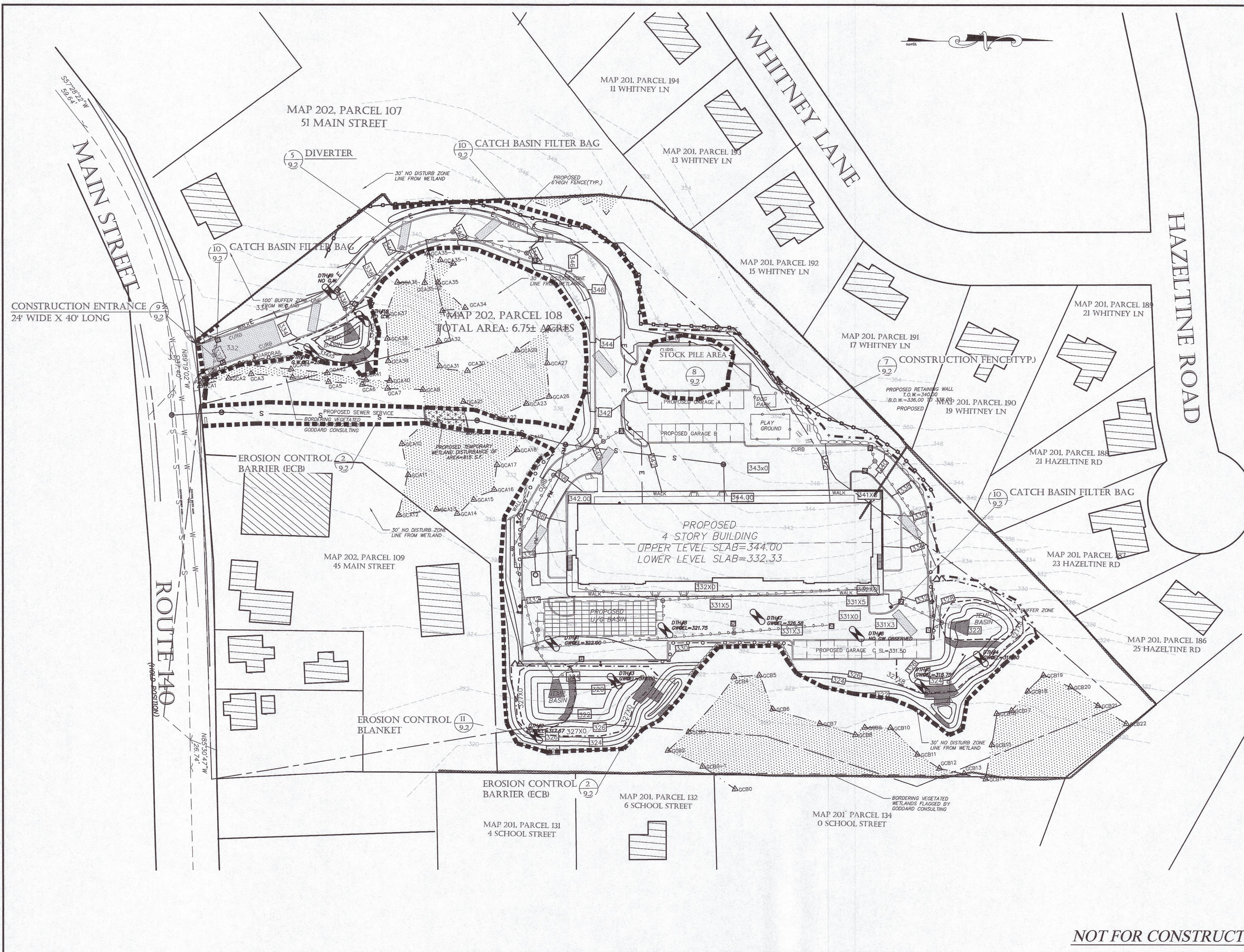
Upton Apartments
47 Main Street,
Upton Massachusetts
Preliminary
Residential Development Plans
Comprehensive Permit Application
Upton Zoning Board of Appeals

SHEET TITLE

LANDSCAPE
PLAN

SHEET NO.

C-8.0

[illegible]

PROJECT NO.	J-016
DESIGNED BY	PML
CHECKED BY	MD
DATE	9/13/23
CAD FILE	J-016 SITE PLAN
PLAN NO.	

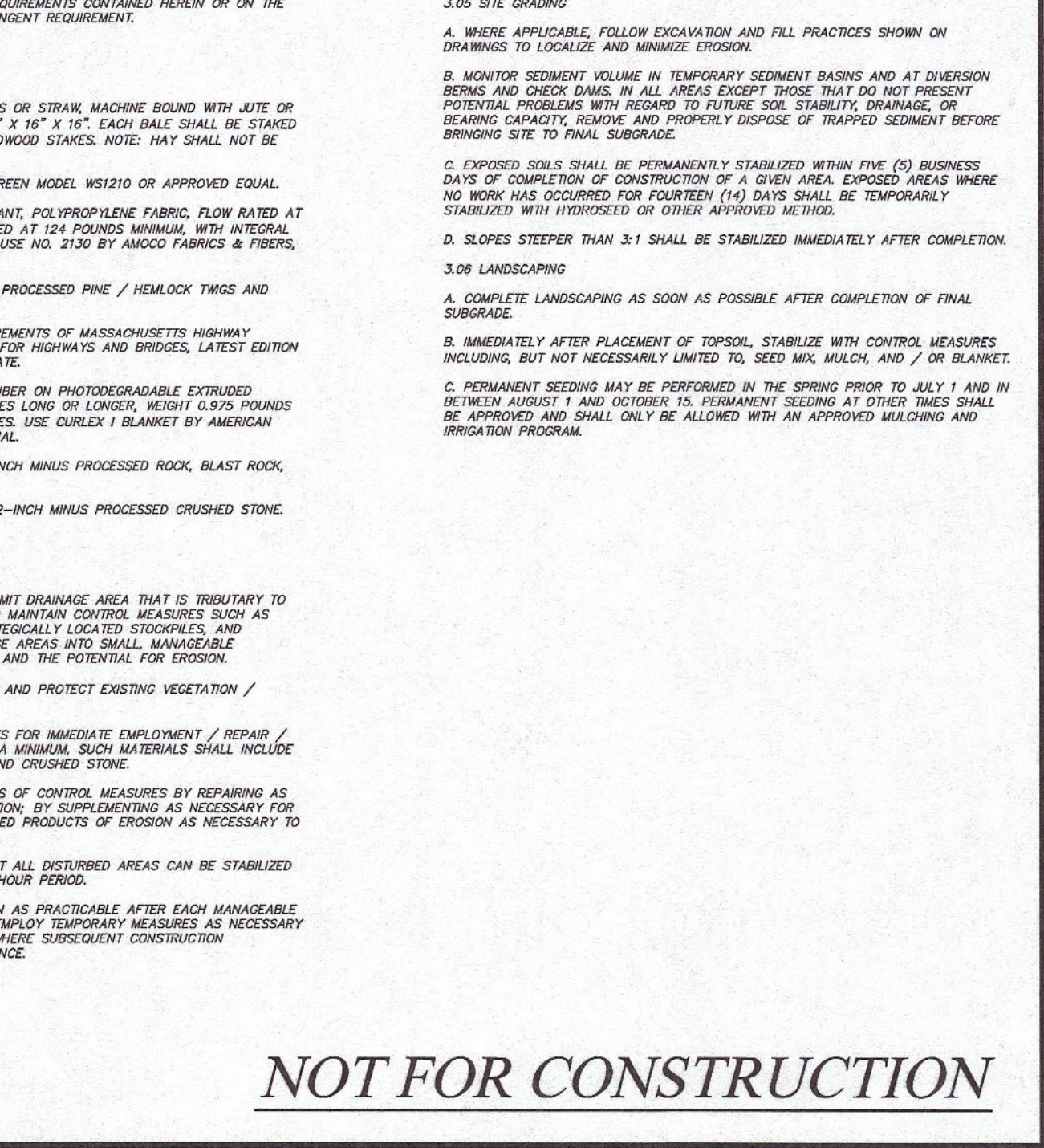
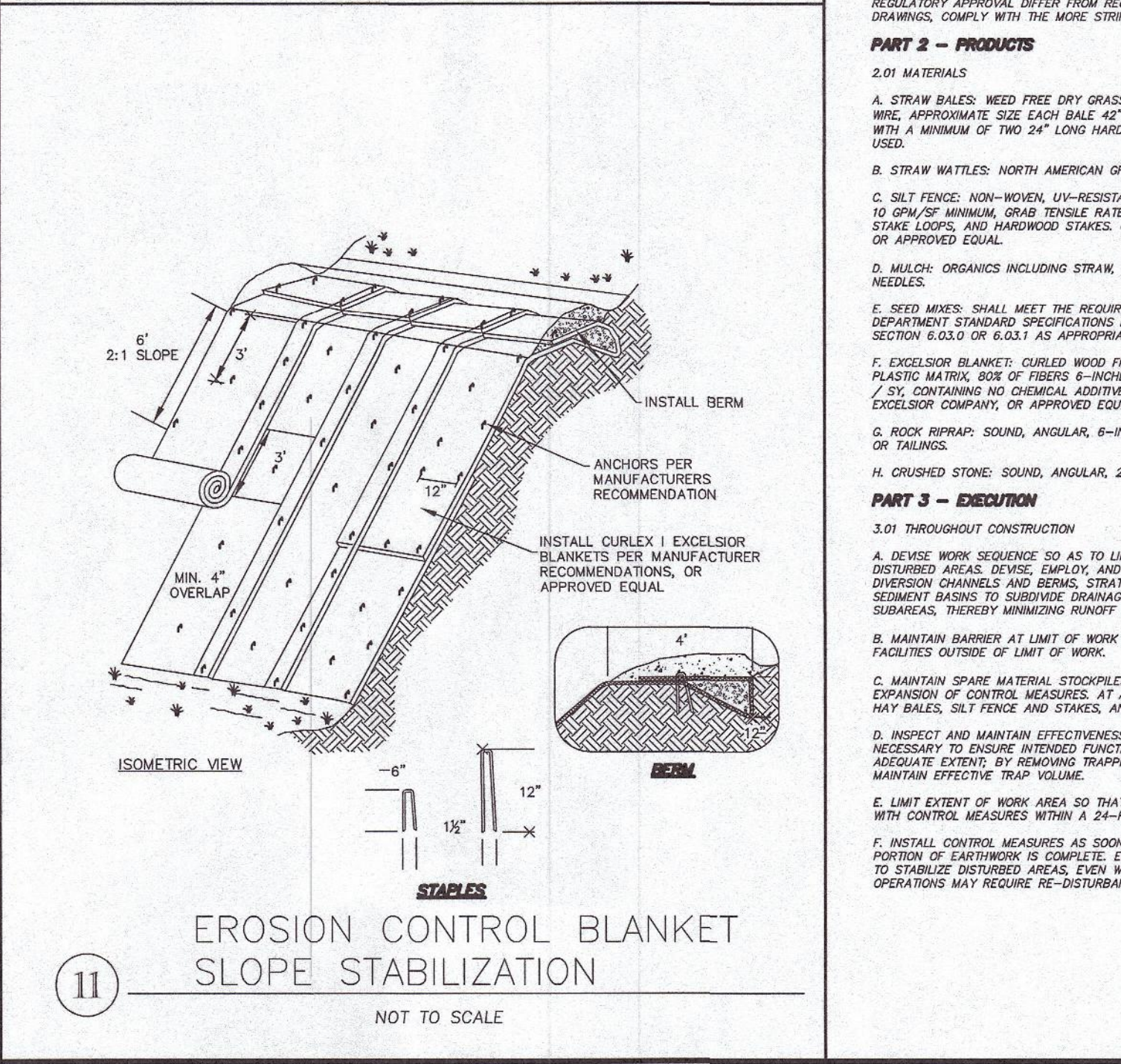
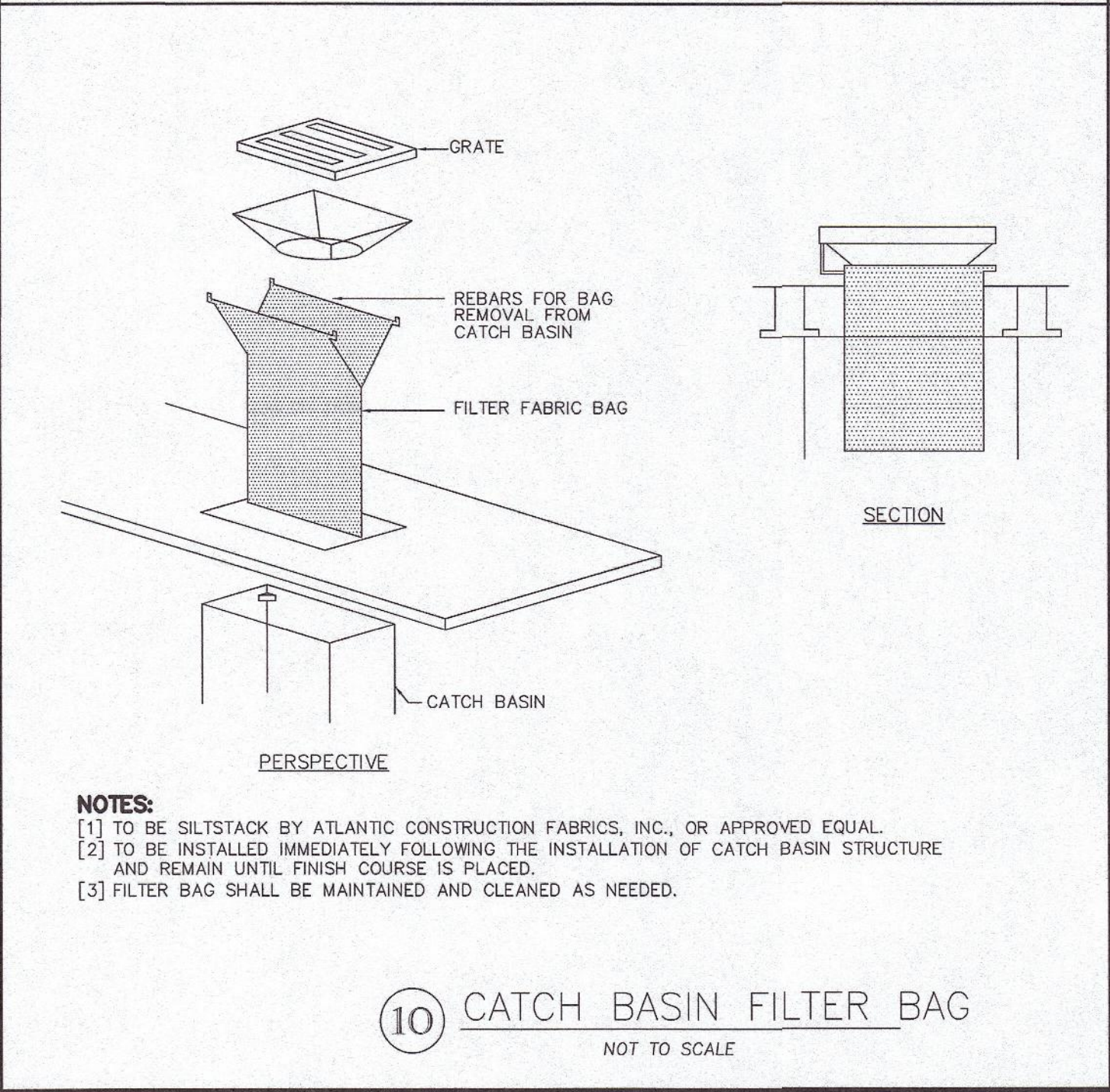
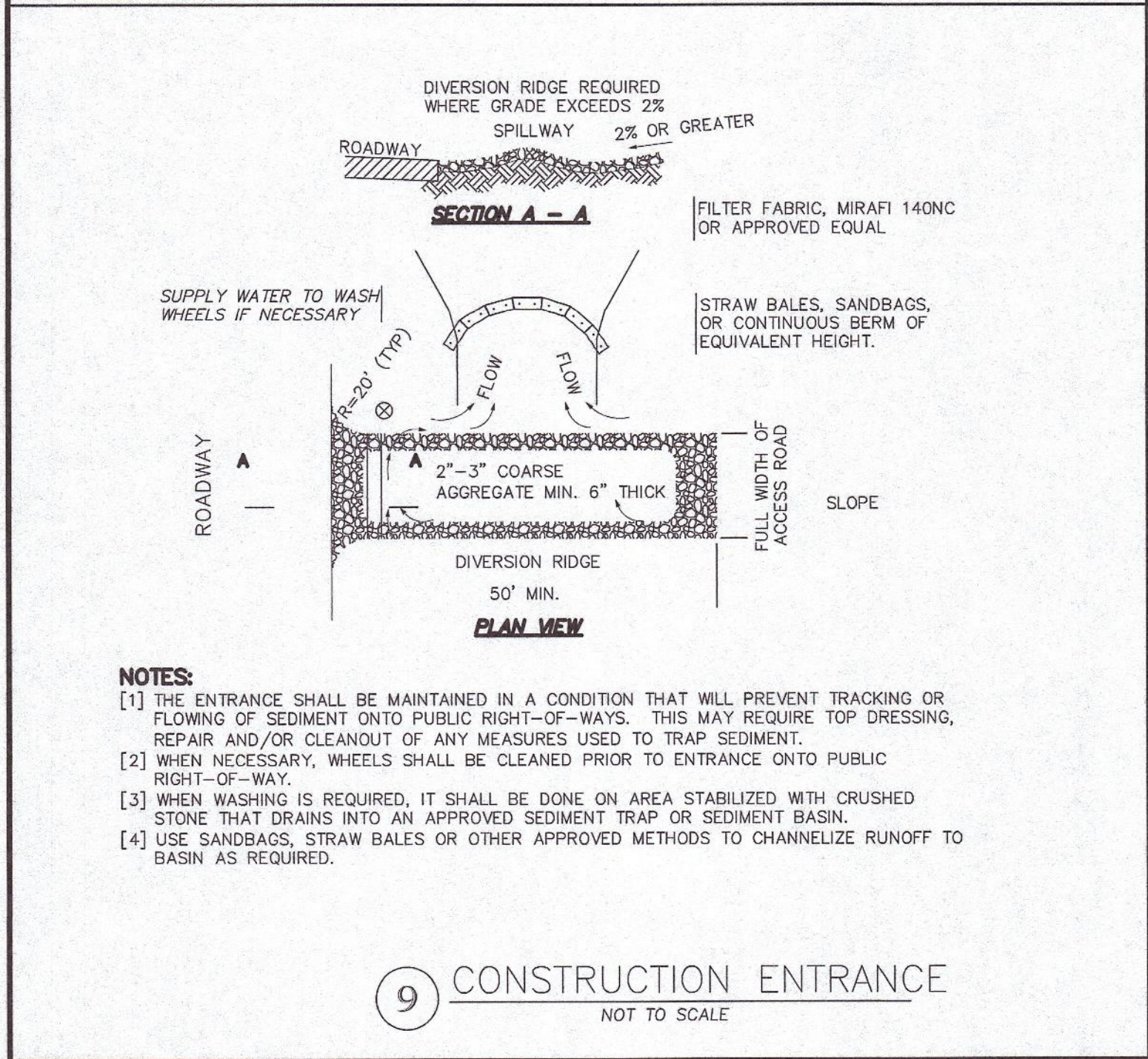
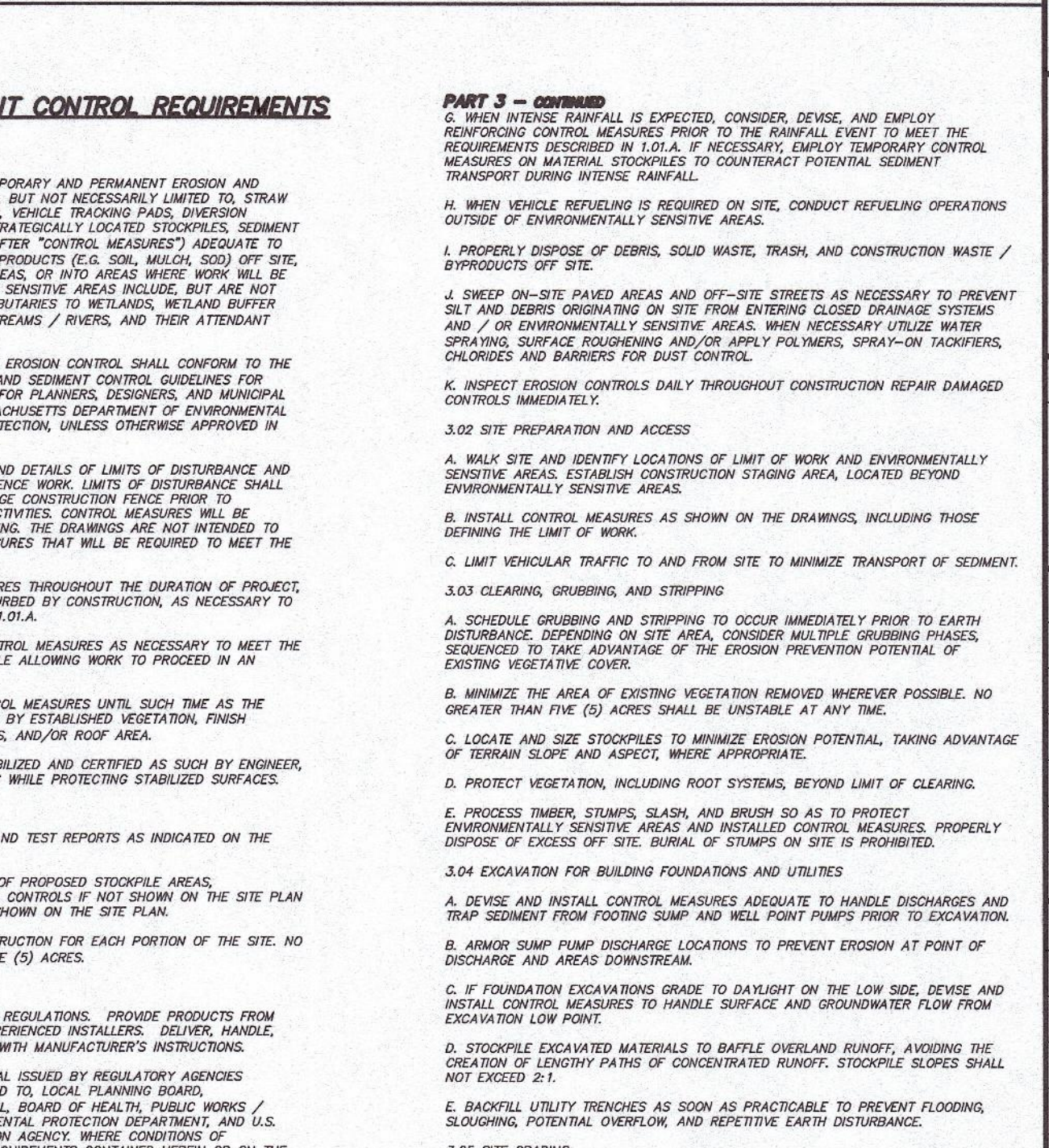
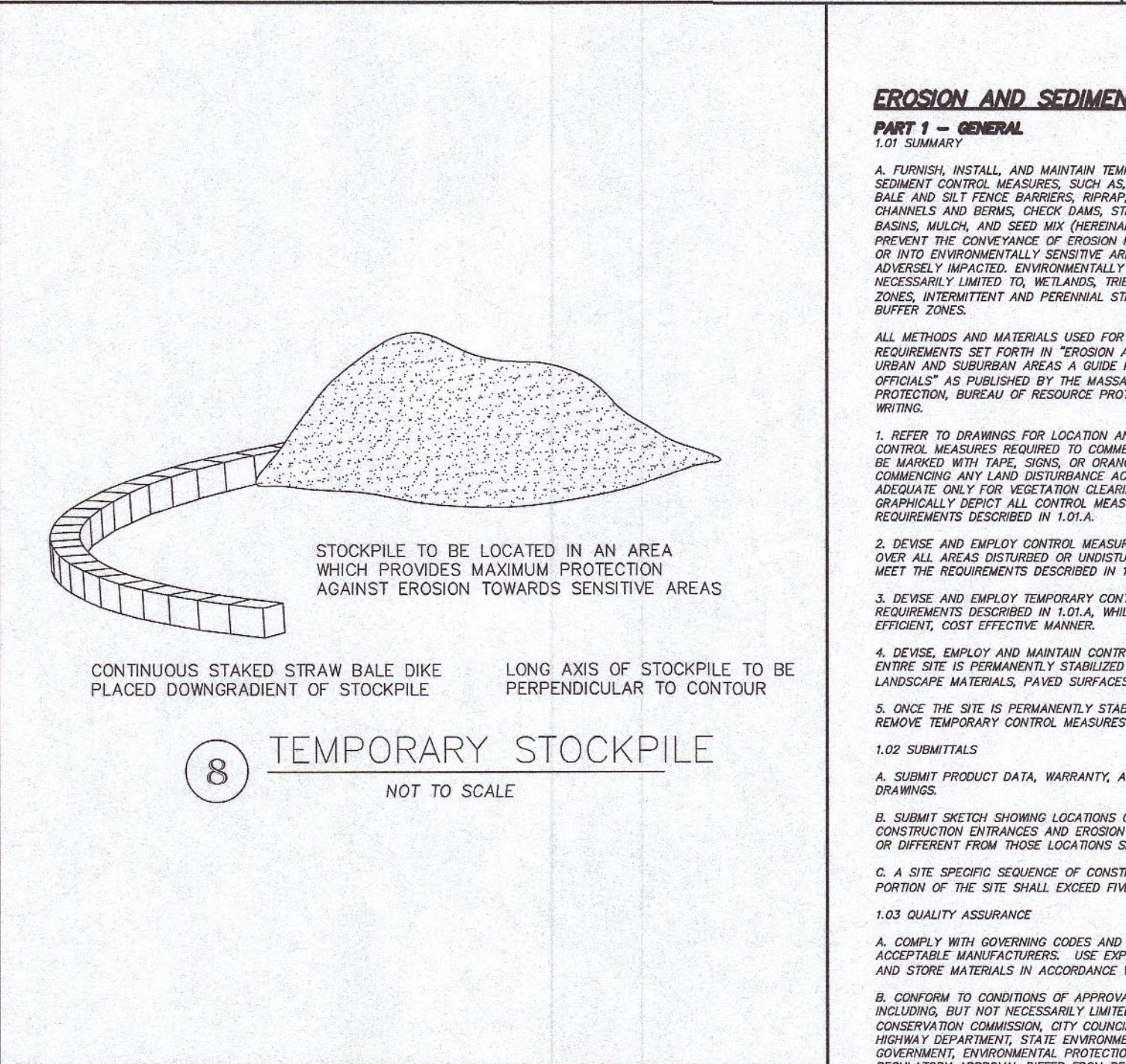
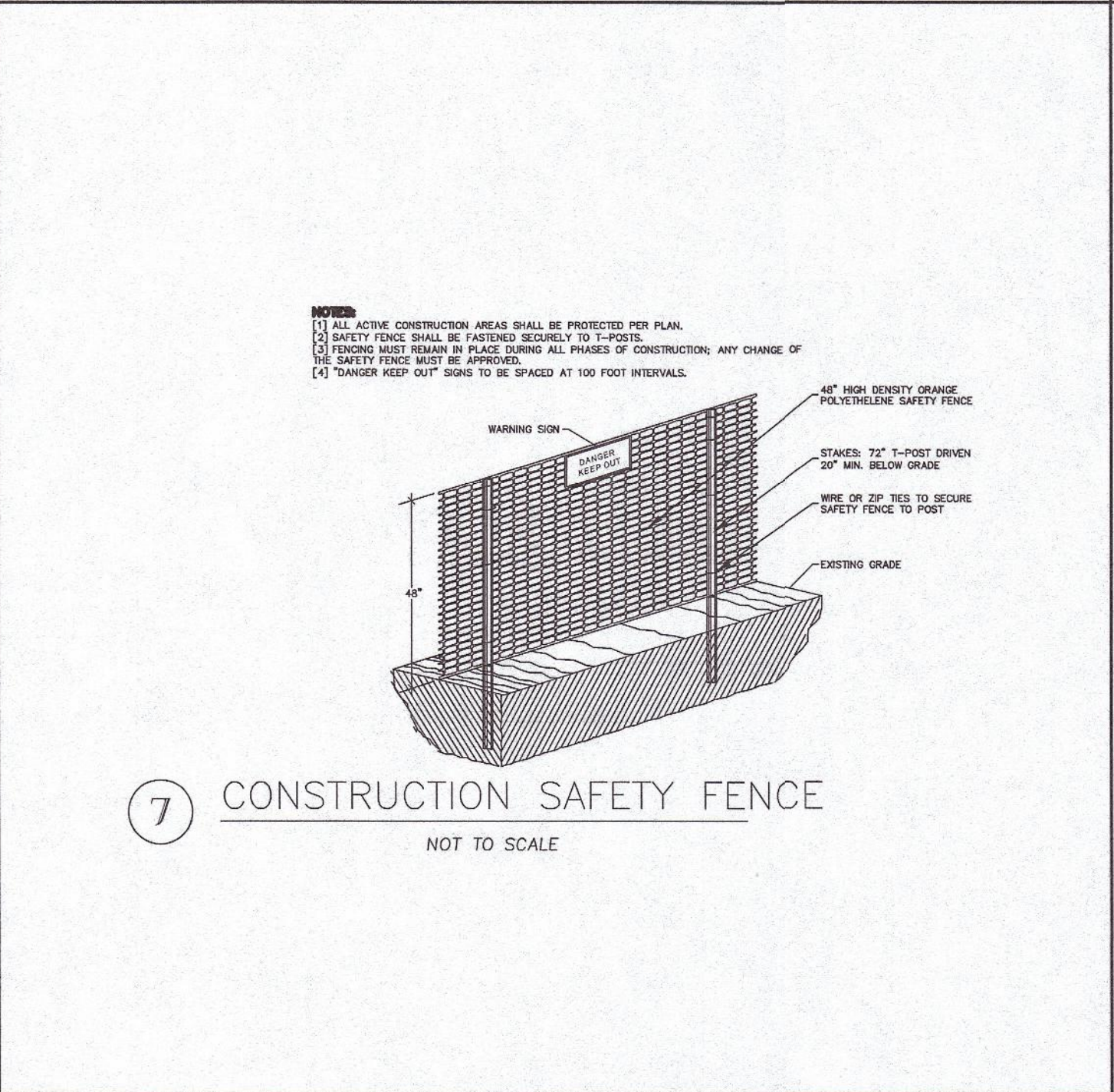
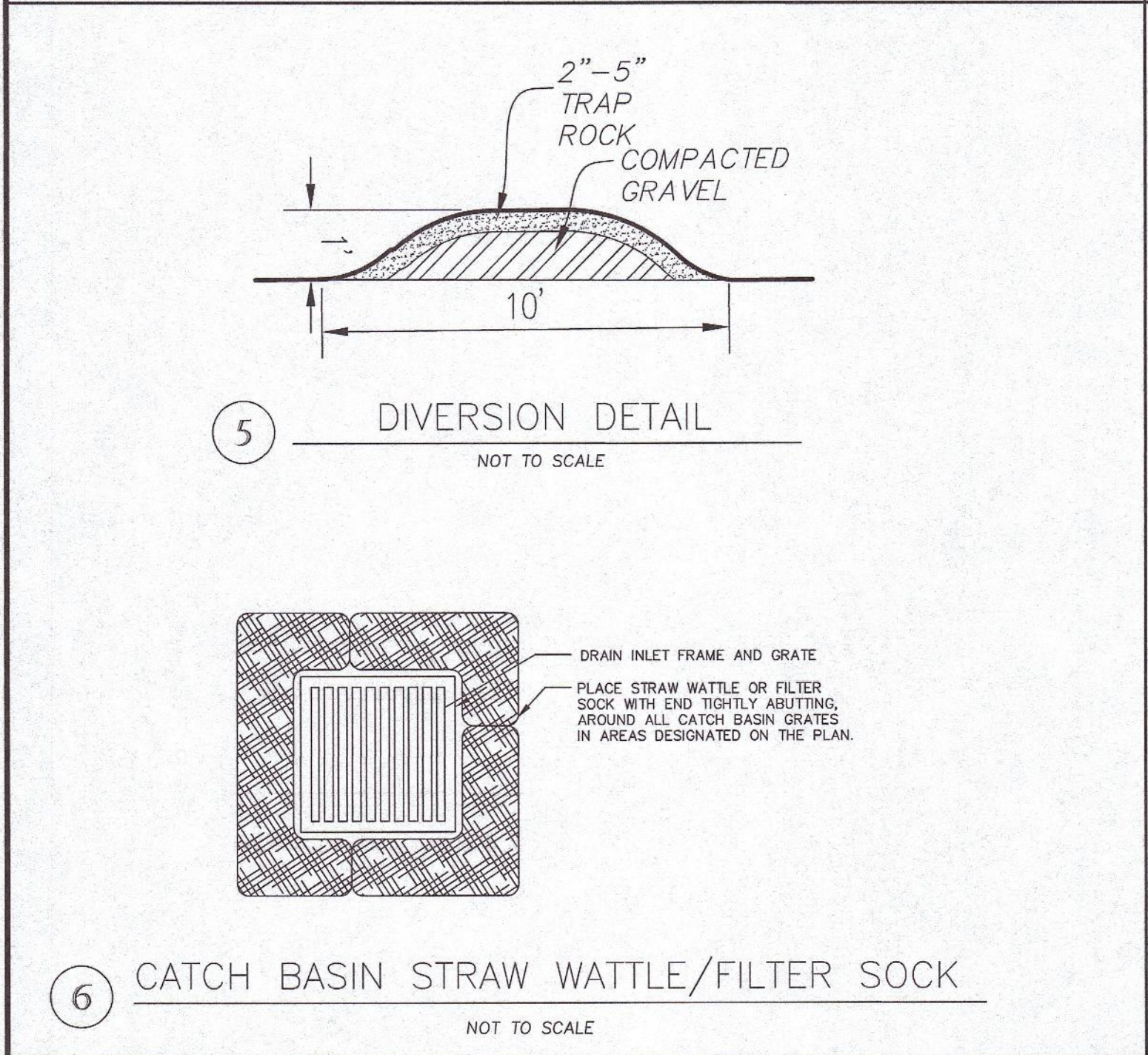
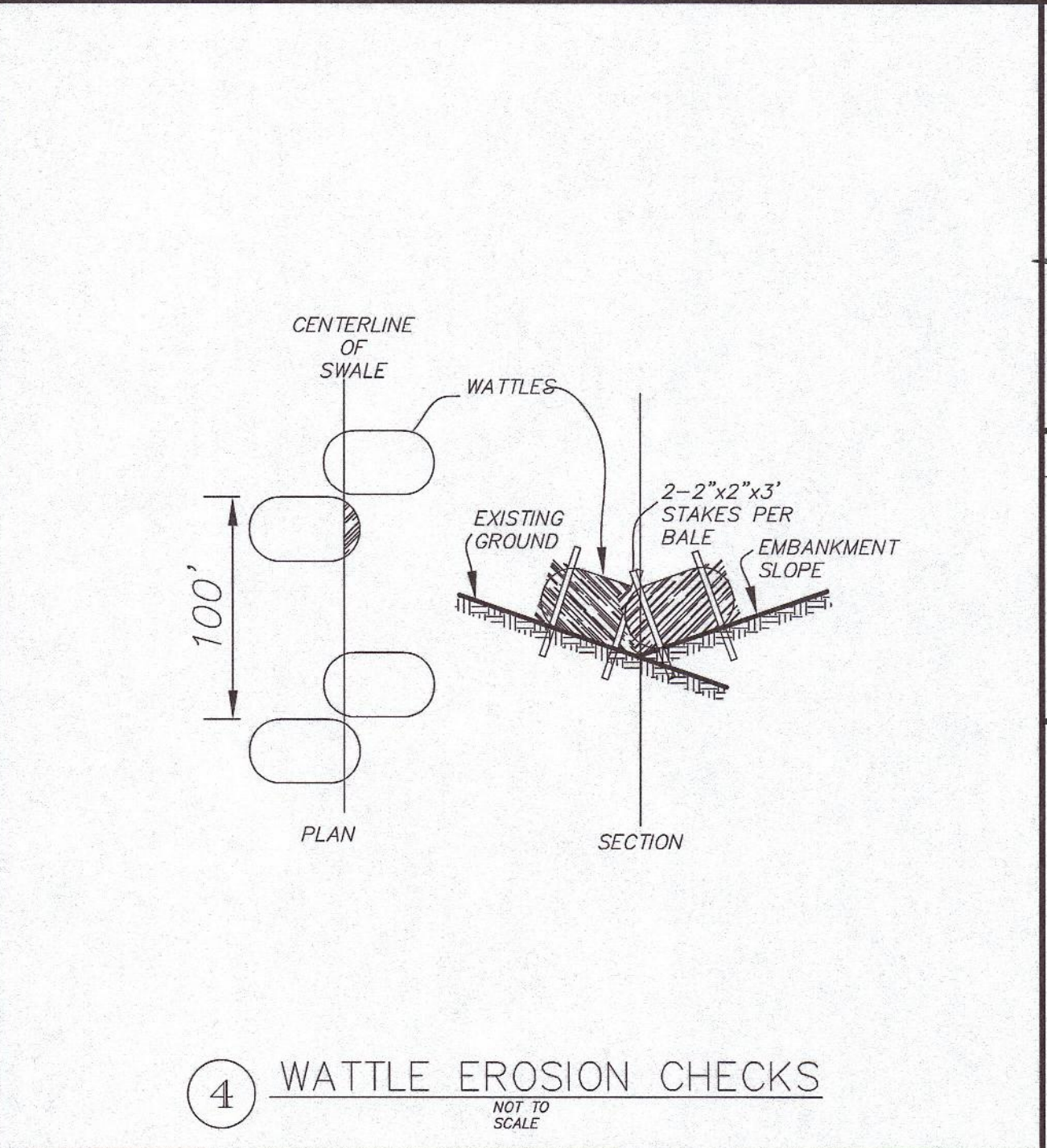
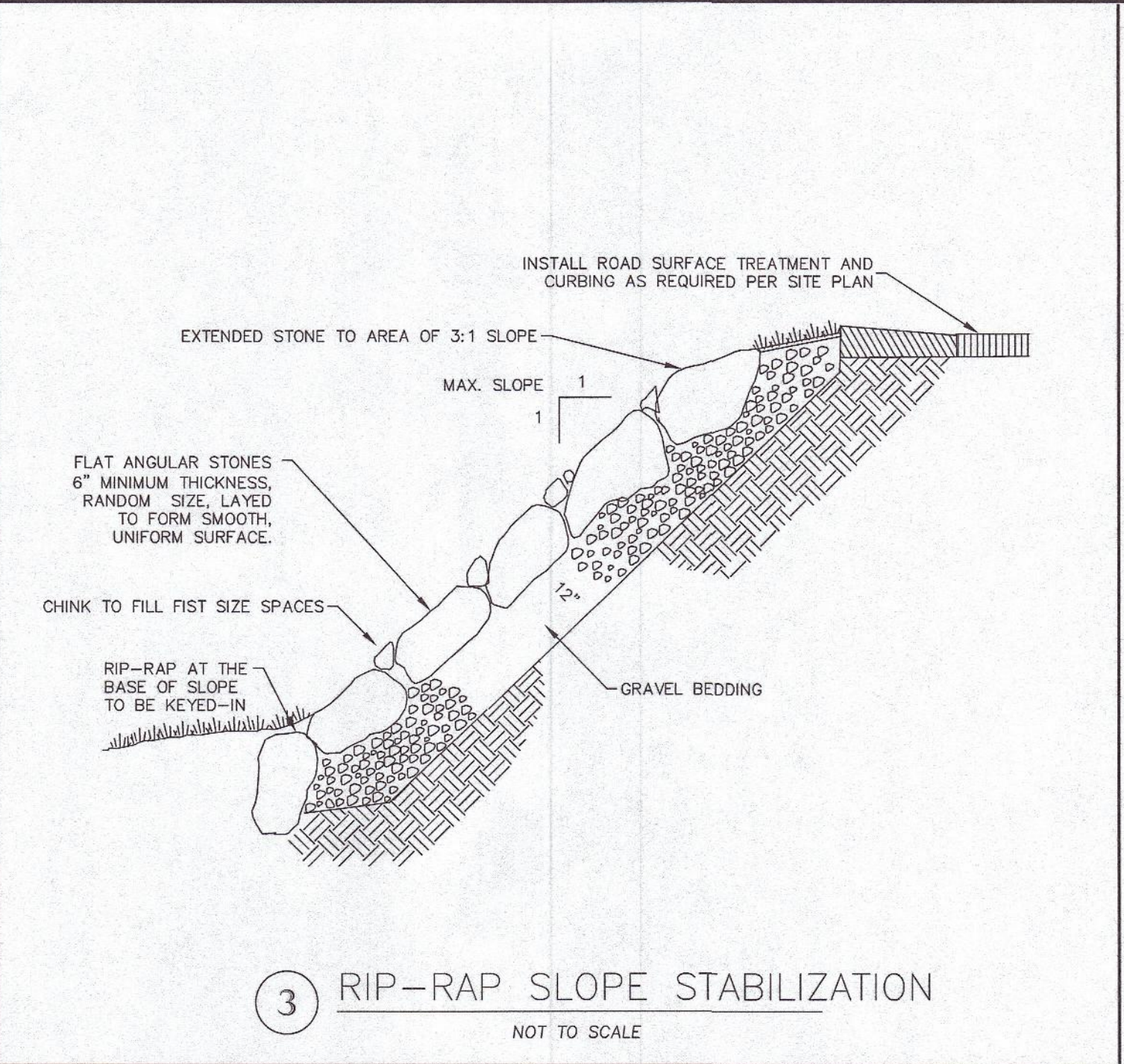
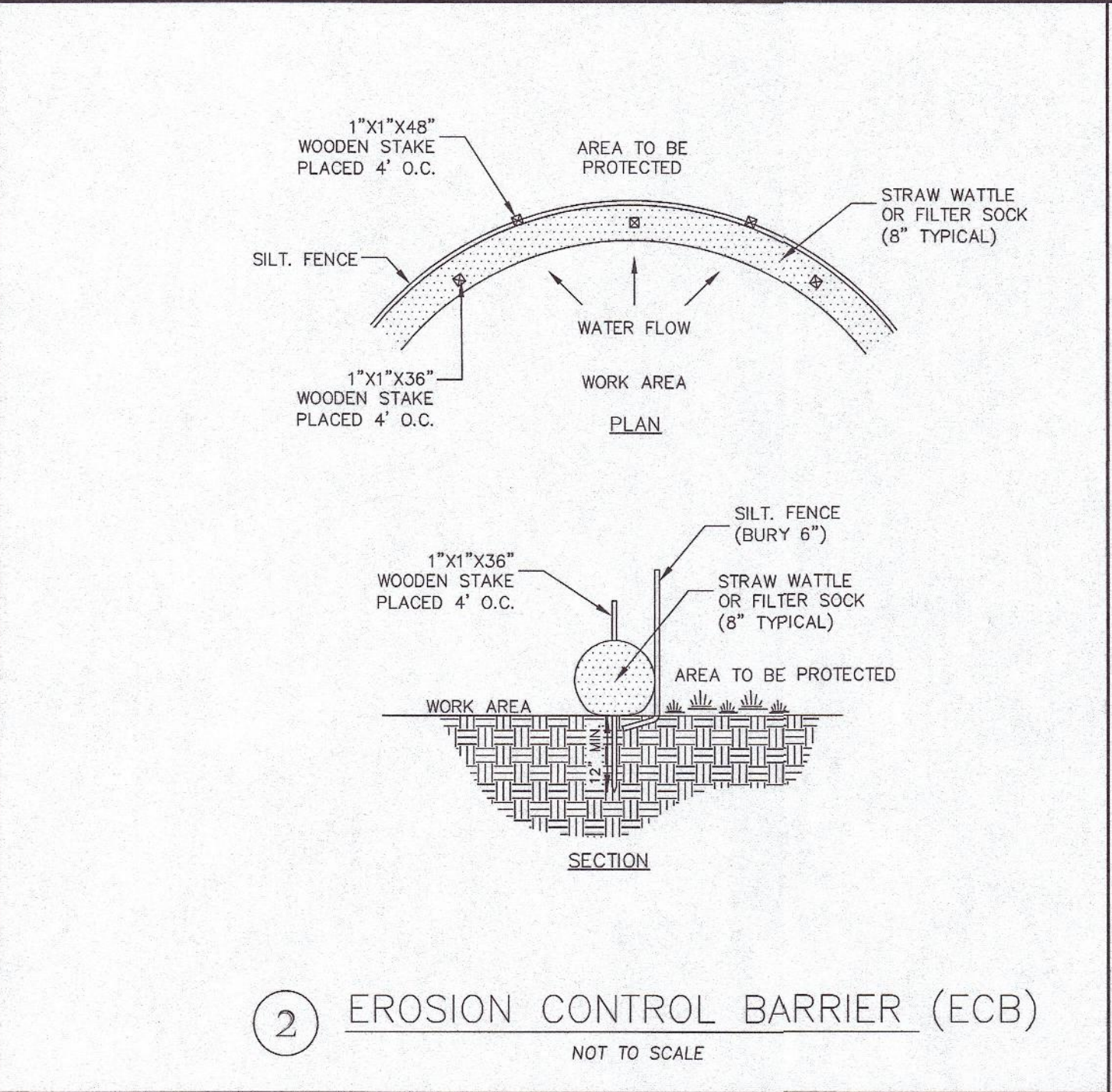
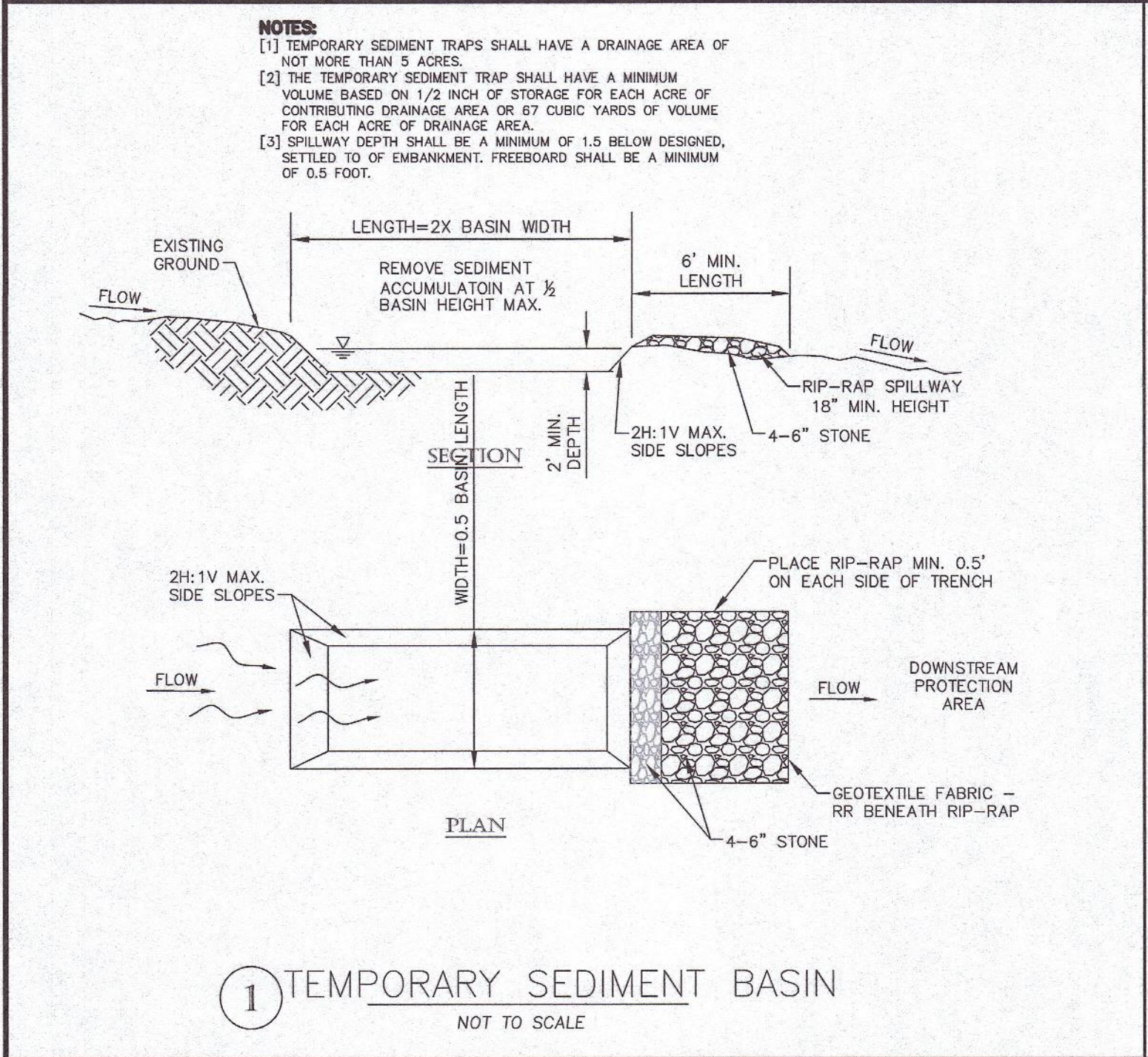
APPLICANT/DEVELOPER:
LOBISSER BUILDING CORP.
1 Charlesview Road • Hopedale, MA 01747
P:(508) 478-6235

TITLE:

Upton Apartments
47 Main Street,
Upton Massachusetts
Preliminary
Residential Development Plans
Comprehensive Permit Application
Upton Zoning Board of Appeals

SHEET TITLE	
EROSION CONTROL PLAN	

SHEET NO.	
C-9.1	



D&L Design Group
Civil Engineering & Land Surveying
115 Water Street • Milford, MA 01757
P: (508) 408-2577
www.dandldesigngroup.com

P.E. P.L.S.

9-13-23

GRAPHIC SCALE		
40	0	20 40 80
(IN FEET)		
1 inch = 40 feet		

REVISIONS		
REV.	DATE	DESCRIPTION

PROJECT NO.	J-016
DESIGNED BY	PML
CHECKED BY	MD
DATE	9/13/23
CAD FILE	J-016 SITE PLAN
PLAN NO.	

APPLICANT/DEVELOPER:
LOBISSER BUILDING CORP.
1 Charlesview Road • Hopedale, MA 01747
P: (508) 478-5235

TITLE:
Upton Apartments
47 Main Street,
Upton Massachusetts
Preliminary
Residential Development Plans
Comprehensive Permit Application
Upton Zoning Board of Appeals

SHEET TITLE
**EROSION CONTROL
NOTES & DETAILS**

SHEET NO.
C-9.2